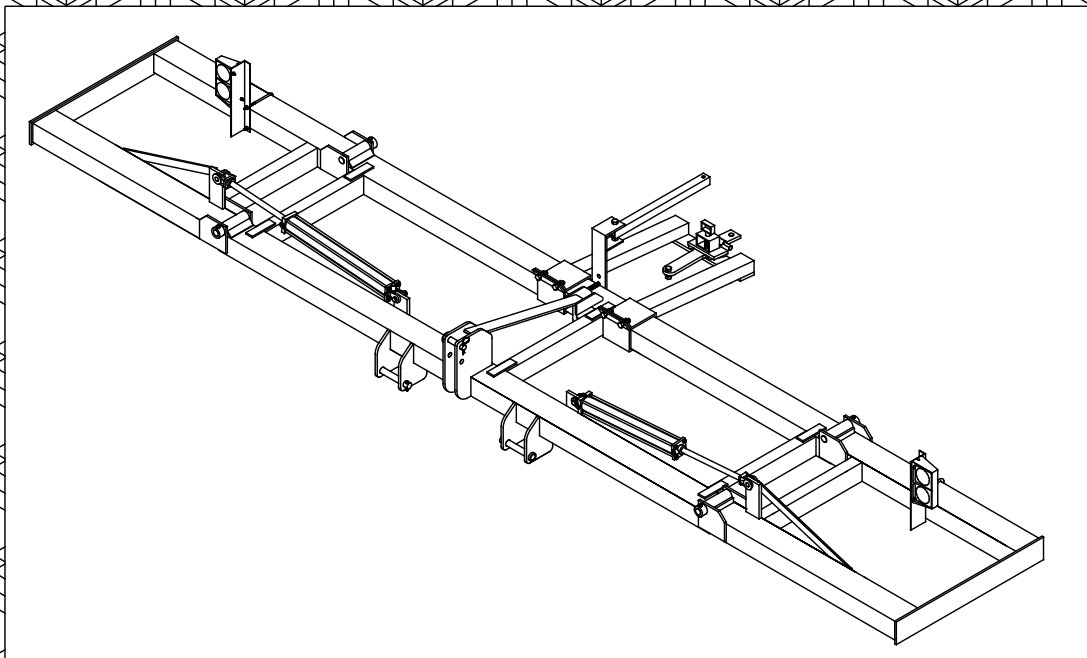




*PROGRESSIVE
FARM PRODUCTS, INC.*

OPERATOR'S MANUAL
1100 SERIES
3-POINT TOOL BAR



COME VISIT US ON THE WEB AT: www.progressivefarm.com

SETUP AND OPERATION

When ordering parts, provide the complete serial number, as well as the desired part number and description.

For convenience and future reference, record the following information in the spaces provided below:

DATE PURCHASED: ____/____/____

DEALER NAME: _____

DEALER PHONE: _____

MODEL NUMBER: _____

SERIAL NUMBER: _____

NOTE: Throughout this manual, references of “right” or “right side” and “left” or “left side” are always from a point behind the implement facing forward, in the direction of travel.

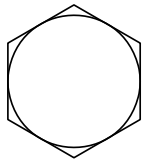
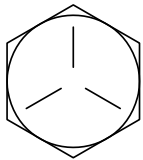
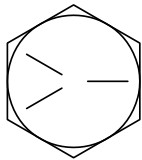
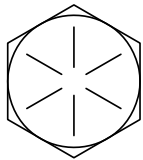
SAFETY FIRST!

FOLLOW THESE RULES:

1. Comply with your state and local laws governing highway safety while moving machinery on the highway.
2. The SMV reflector emblem should be used at all times on public roads, and always use the flashing warning lights on your tractor and implement.
3. Drive at a reasonable speed to maintain complete control of your machine at all times. Do not exceed **20 MPH (32.2 km/h)** while transporting. Avoid heavily traveled roads whenever possible.
4. Hydraulic fluid escaping under pressure can have enough force to penetrate your skin. If you are injured by escaping fluid, see a doctor at once. Serious infection or reaction can result if medical treatment is not given immediately. Make sure all connections are tight and that hoses and lines are in good condition before applying pressure to the system. Relieve all pressure before disconnecting any lines or performing other work on the hydraulic system. To find a leak under pressure, use a small piece of cardboard or wood, **NEVER** use your hands.
5. At least once a year, inspect all hydraulic hoses for leaks, cracks, abrasions, and pinched areas. Tightened fittings or replace hoses as needed.
6. Always be sure the hydraulic lines and cylinders are free of air and do not leak. After connecting any new parts, replacing old parts, or servicing the hydraulic components, carefully cycle the hydraulic cylinders several times to purge trapped air from the system. Check all connections for any leakage.
7. Always block up raised equipment when servicing it. **NEVER** rely on the hydraulic system to support the implement during servicing.

BOLT TORQUE

1. Improperly tightened bolts will result in damage, breakage, expense, and lost time.
2. Always replace bolts with the specified grade and type.
3. Torque all fasteners to the proper value during assembly, then check every two (2) hours of operation until they remain tight.
4. Use the following torque chart as a guide to insure proper tightening of the fasteners.
5. Make a daily inspection of the implement checking for loose bolts as well as leaking hoses.

BOLT Ø - TPI	 GRADE 2	 GRADE 5	 A - 325	 GRADE 8
3/8 - 16	25	35		50
7/16 - 14	35	55		80
1/2 - 13	55	85		125
9/16 - 12	75	125		175
5/8 - 11	105	170		235
3/4 - 10	185	305		425
7/8 - 9	170	445		690
1 - 8	260	670		1030
1-1/8 - 7	365	900		1460
1-1/4 - 7	515	1275		2060
1-3/8 - 6	675	1675		2700
1-1/2 - 6	900	2150		3500

TORQUE VALUES ARE IN FT./LBS. AND ARE BASED ON PLATED OR GREASE COATED HARDWARE. INCREASE VALUES 5 - 10% FOR FINE THREADS. USE 65% OF THE LISTED VALUE FOR JAM NUTS.

SAFETY FIRST!

FOLLOW THESE RULES:

Keep all safety equipment, such as hitch pins, chains, SMV emblems, lights, reflectors, etc... in good repair. Please note all safety decals and keep them on place. New decals are available from your dealer.

Misuse, abuse, neglect, or modification of this machine can cause:

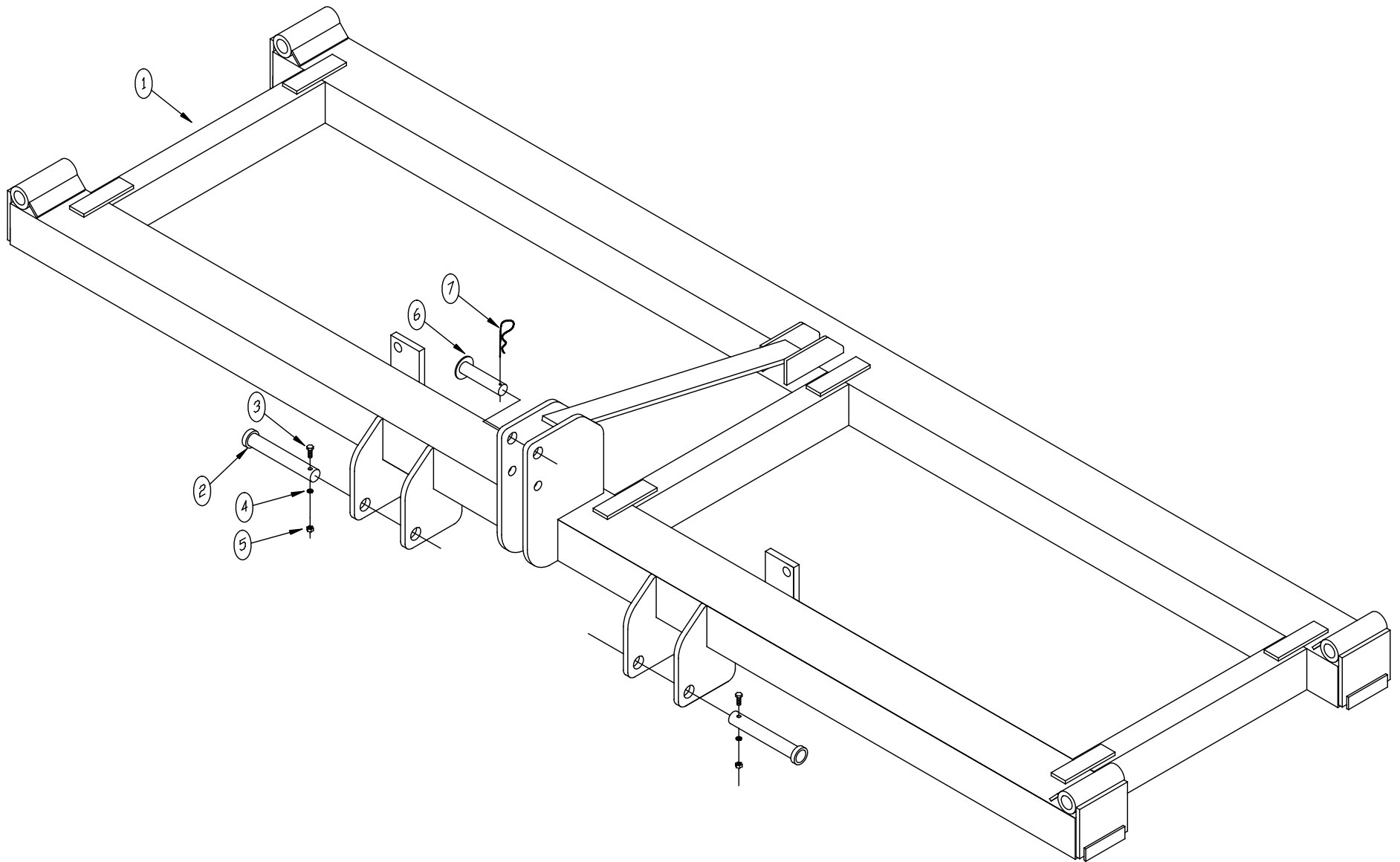
- mechanical breakdown
- property damage
- personal injury or death

Always use proper safety precautions and common sense. Set a good example and show your workers how to work safely. Be an example, not a statistic.

RECOMMENDED TIRE PRESSURES

Tire Size & Ply	Pressure
13.6 x 38 – 12 ply	44 PSI
12.5L x 15 – 12 ply	50 PSI
12.5L x 15 – 8 ply	36 PSI
9.5L x 15 – 8 ply	35 PSI
16.5 x 16.1 – 10 ply	36 PSI
18.4 x 26 – 10 ply	26 PSI
14.9R x 46 – 8* radial	68 PSI
5.30 x 12 – 6 ply	55 PSI
16 x 6.50 x 8 – 4 ply	28 PSI
4.80 x 8 – 4 ply	42 PSI

ATTACHING THE LIFT PINS

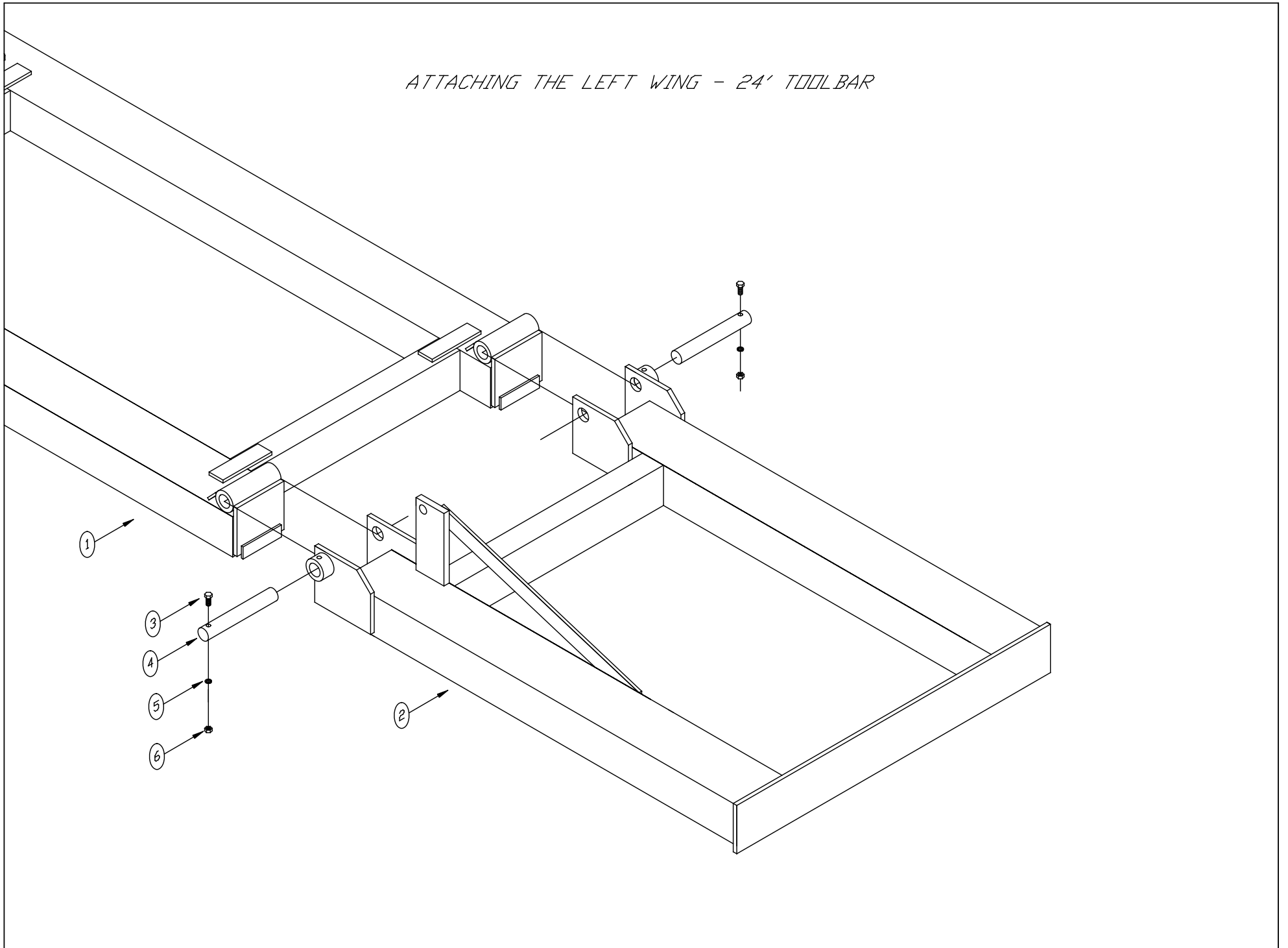


ATTACHING THE LIFT PINS

NOTES:

ITEM	QTY	PART#	DESCRIPTION
1	1	802034	MAINFRAME (15'-32' MODELS)
1	1	8020805	MAINFRAME (37-1/2' MODEL) (NOT SHOWN)
2	2	802044	2-POINT LIFT PIN - WELDED
3	2	101127	3/8-16 X 2" HEX BOLT - PLT. GR.5
4	2	101220	3/8" LOCK WASHER - PLT.
5	2	101211	3/8-16 HEX NUT - PLT.
6	1	802047	3-POINT LIFT PIN - WELDED
7	1	101265	1/4 X 2" COTTER PIN

ATTACHING THE LEFT WING - 24' TOOLBAR



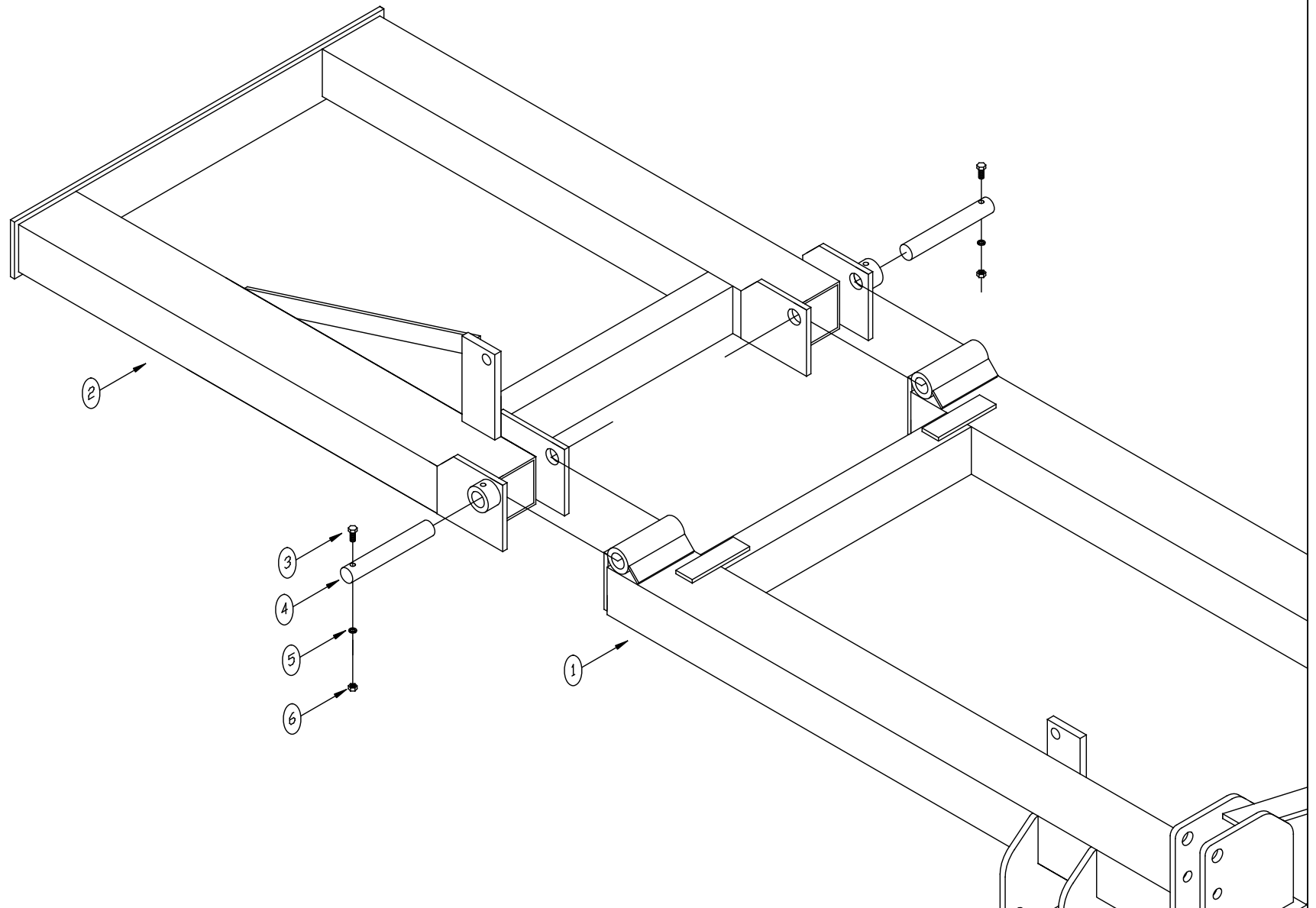
REFERENCE# 1100A002	DATE 05/13/08	REV 03/20/13 AU
------------------------	------------------	--------------------

ATTACHING THE LEFT WING - 24' TOOLBAR

NOTES:

ITEM	QTY	PART#	DESCRIPTION
1	1	802034	MAINFRAME (15'-32' MODELS)
2	1	802035	56" - LEFT WING
3	2	101140	7/16-14 X 3" HEX BOLT - PLT, GR5
4	2	602130	Ø1 X 10" - HINGE PIN
5	2	101221	7/16" LOCK WASHER - PLT,
6	2	101212	7/16" HEX NUT - PLT,

ATTACHING THE RIGHT WING - 24' TOOLBAR



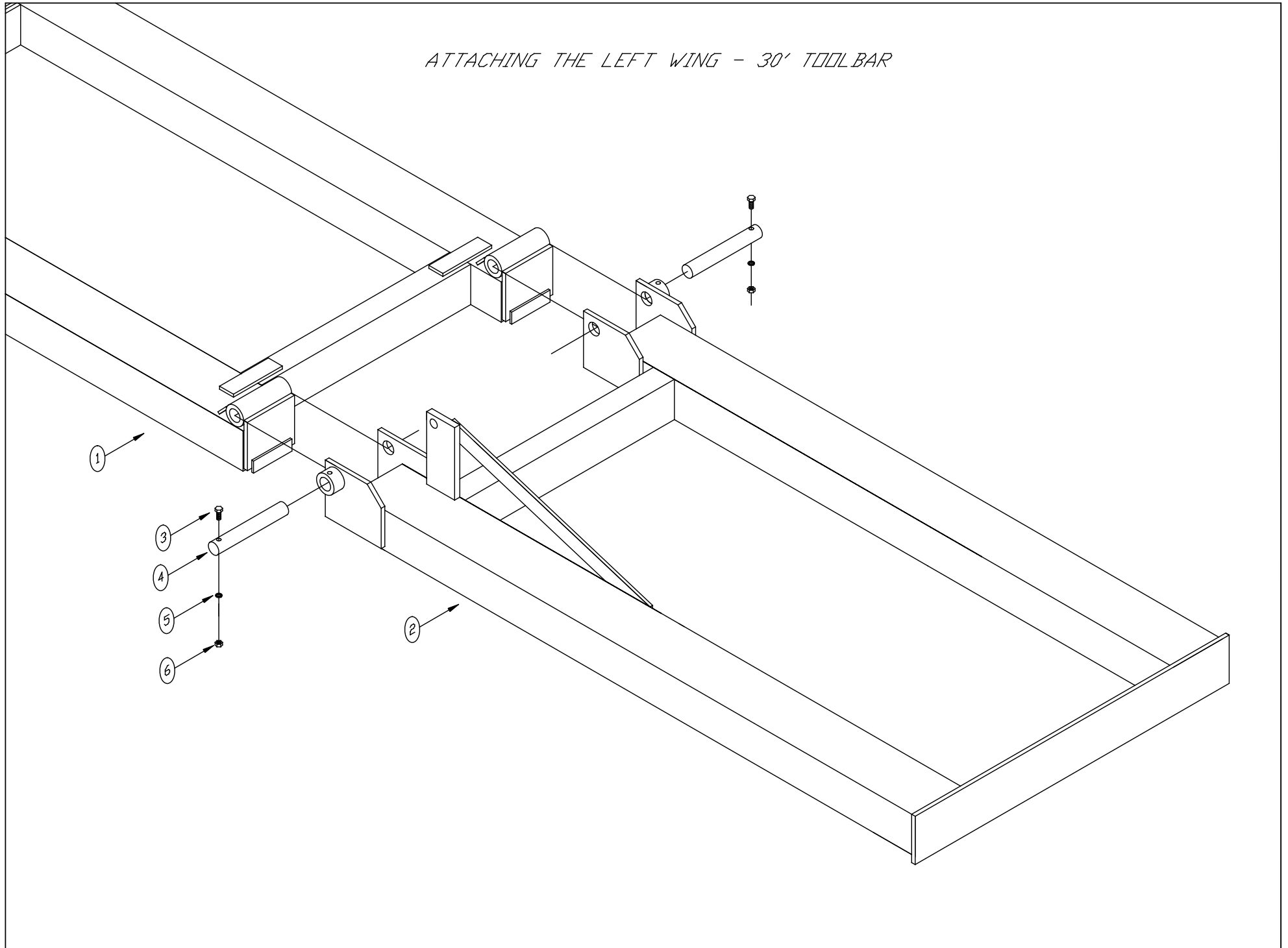
REFERENCE 1100A003	DATE 05/13/08	REV 03/20/13 AU
-----------------------	------------------	--------------------

ATTACHING THE RIGHT WING - 24' TOOLBAR

NOTES:

ITEM	QTY	PART#	DESCRIPTION
1	1	802034	MAINFRAME (15'-32' MODELS)
2	1	802036	56" - RIGHT WING
3	2	101140	7/16-14 X 3" HEX BOLT - PL T, GR5
4	2	602130	Ø1 X 10" - HINGE PIN
5	2	101221	7/16" LOCK WASHER - PL T,
6	2	101212	7/16" HEX NUT - PL T,

ATTACHING THE LEFT WING - 30' TOOLBAR



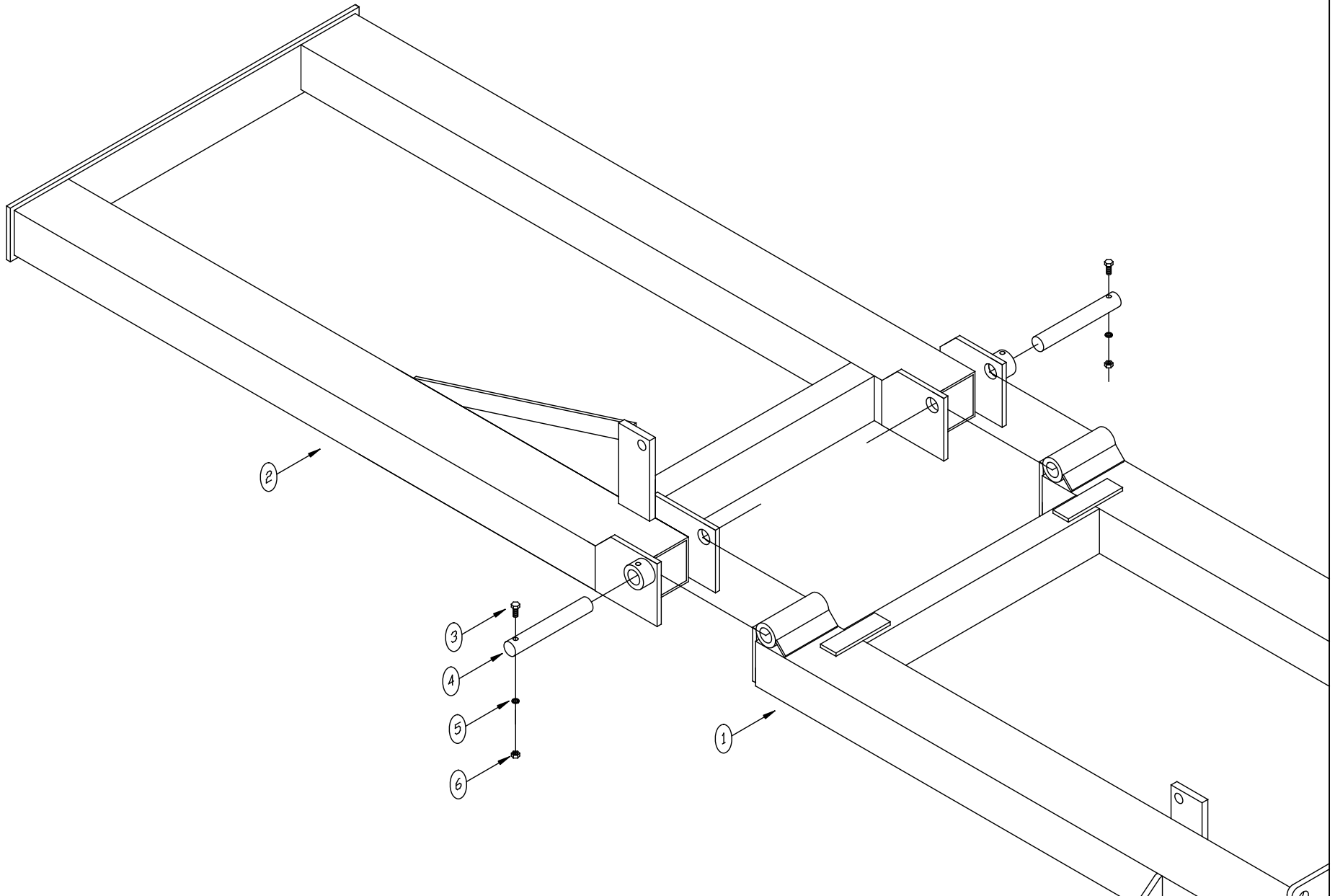
REFERENCE# 1100A004	DATE 05/13/08	REV 03/20/13 AU
------------------------	------------------	--------------------

ATTACHING THE LEFT WING - 30' TOOLBAR

NOTES:

ITEM	QTY	PART#	DESCRIPTION
1	1	802034	MAINFRAME (15'-32' MODELS)
2	1	802037	80" - LEFT WING
3	2	101140	7/16-14 X 3" HEX BOLT - PLT, GR5
4	2	602130	Ø1 X 10" - HINGE PIN
5	2	101221	7/16" LOCK WASHER - PLT,
6	2	101212	7/16" HEX NUT - PLT,

ATTACHING THE RIGHT WING - 30' TOOLBAR



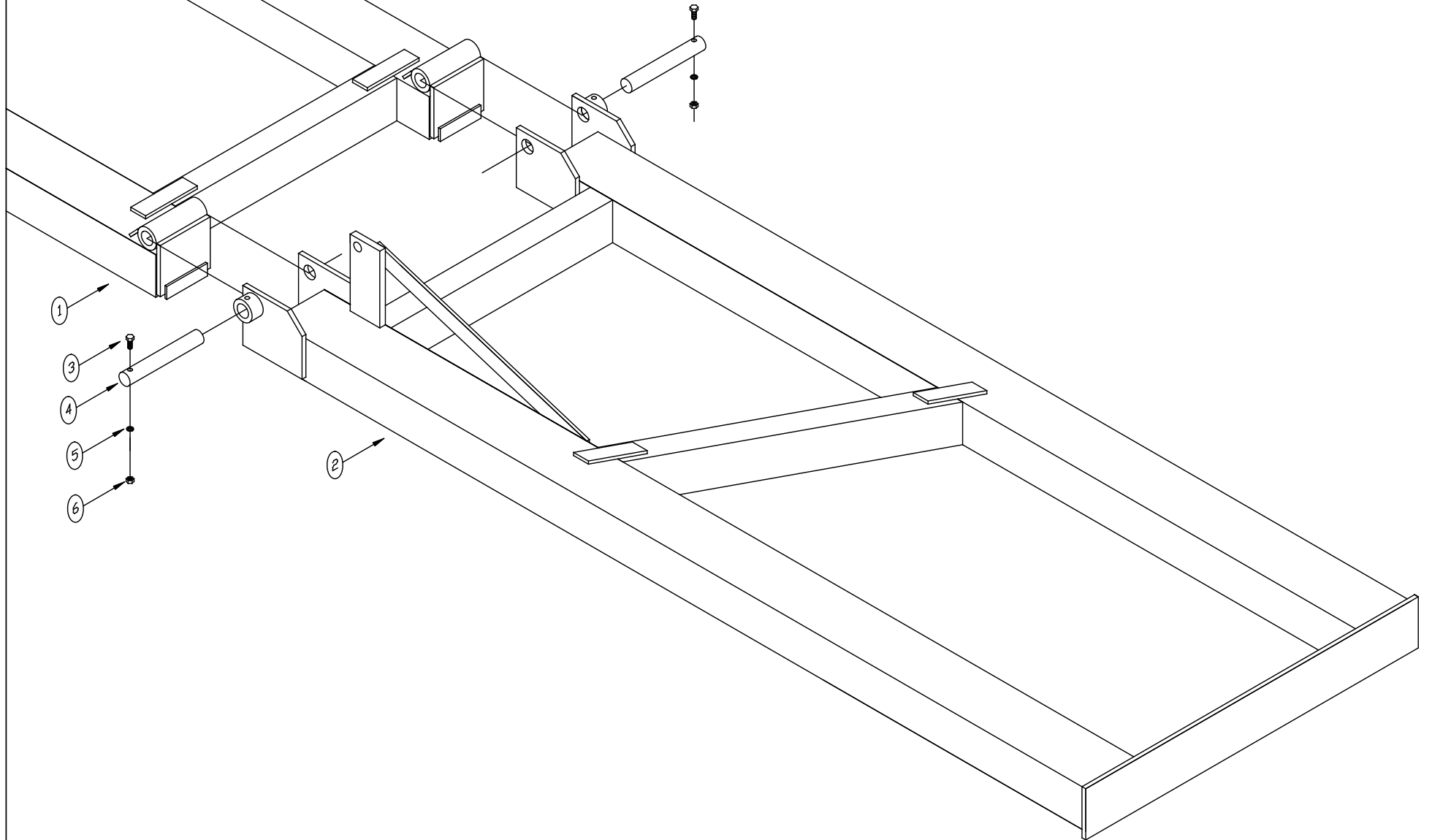
REFERENCE# 1100A005	DATE 05/13/08	REV 03/20/13 AU
------------------------	------------------	--------------------

ATTACHING THE RIGHT WING - 30' TOOLBAR

NOTES:

ITEM	QTY	PART#	DESCRIPTION
1	1	802034	MAINFRAME (15'-32' MODELS)
2	1	802038	80" - RIGHT WING
3	2	101140	7/16-14 X 3" HEX BOLT - PLT, GR5
4	2	602130	Ø1 X 10" - HINGE PIN
5	2	101221	7/16" LOCK WASHER - PLT,
6	2	101212	7/16" HEX NUT - PLT,

ATTACHING THE LEFT WING - 32-1/2' TOOLBAR



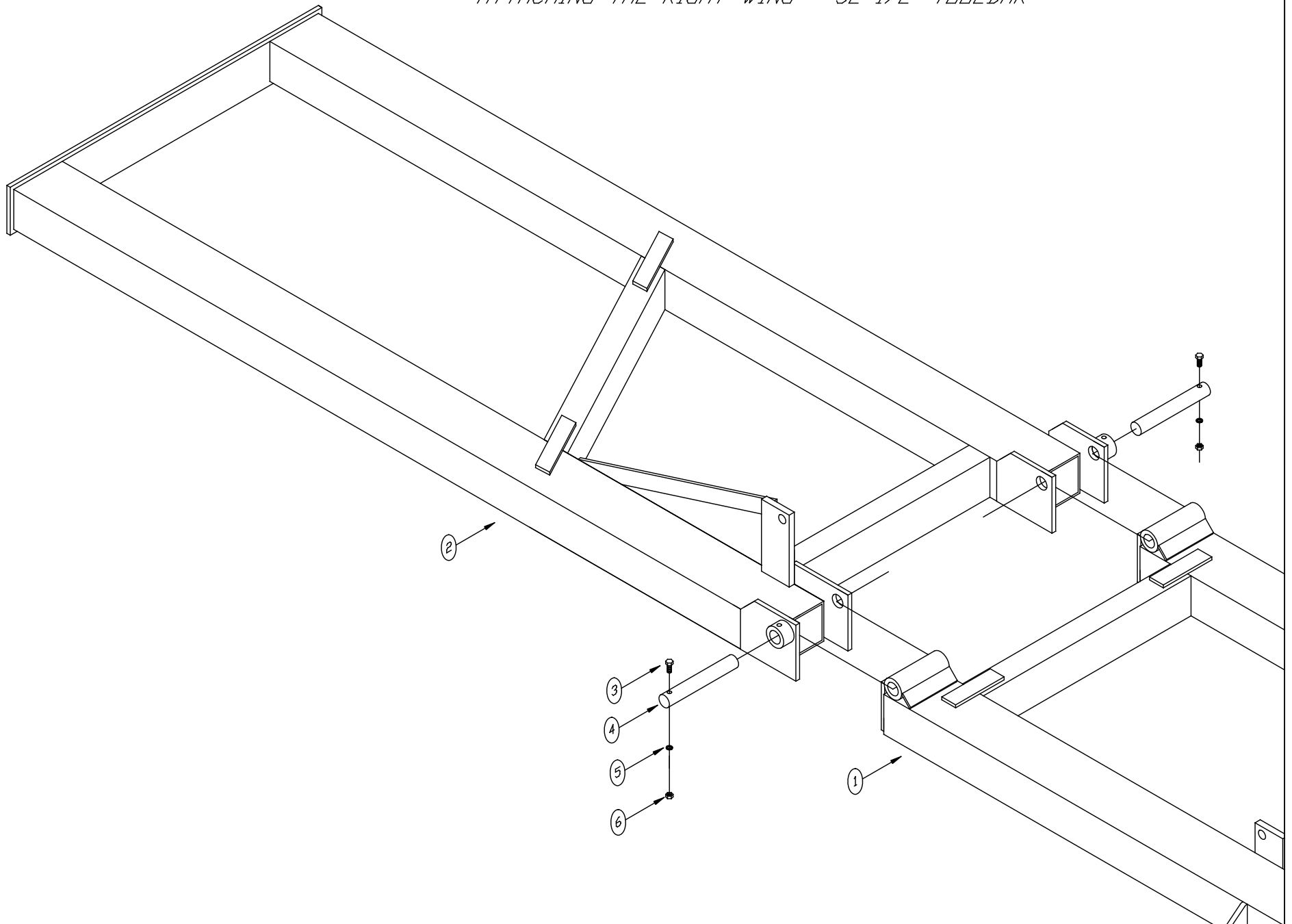
REFERENCE# 1100A006	DATE 05/13/08	REV 03/20/13 AU
------------------------	------------------	--------------------

ATTACHING THE LEFT WING - 32-1/2' TOOLBAR

NOTES:

ITEM	QTY	PART#	DESCRIPTION
1	1	802034	MAINFRAME (15'-32' MODELS)
2	1	802039	110" - LEFT WING
3	2	101140	7/16-14 X 3" HEX BOLT - PLT, GR5
4	2	602130	Ø1 X 10" - HINGE PIN
5	2	101221	7/16" LOCK WASHER - PLT,
6	2	101212	7/16" HEX NUT - PLT,

ATTACHING THE RIGHT WING - 32-1/2' TOOLBAR

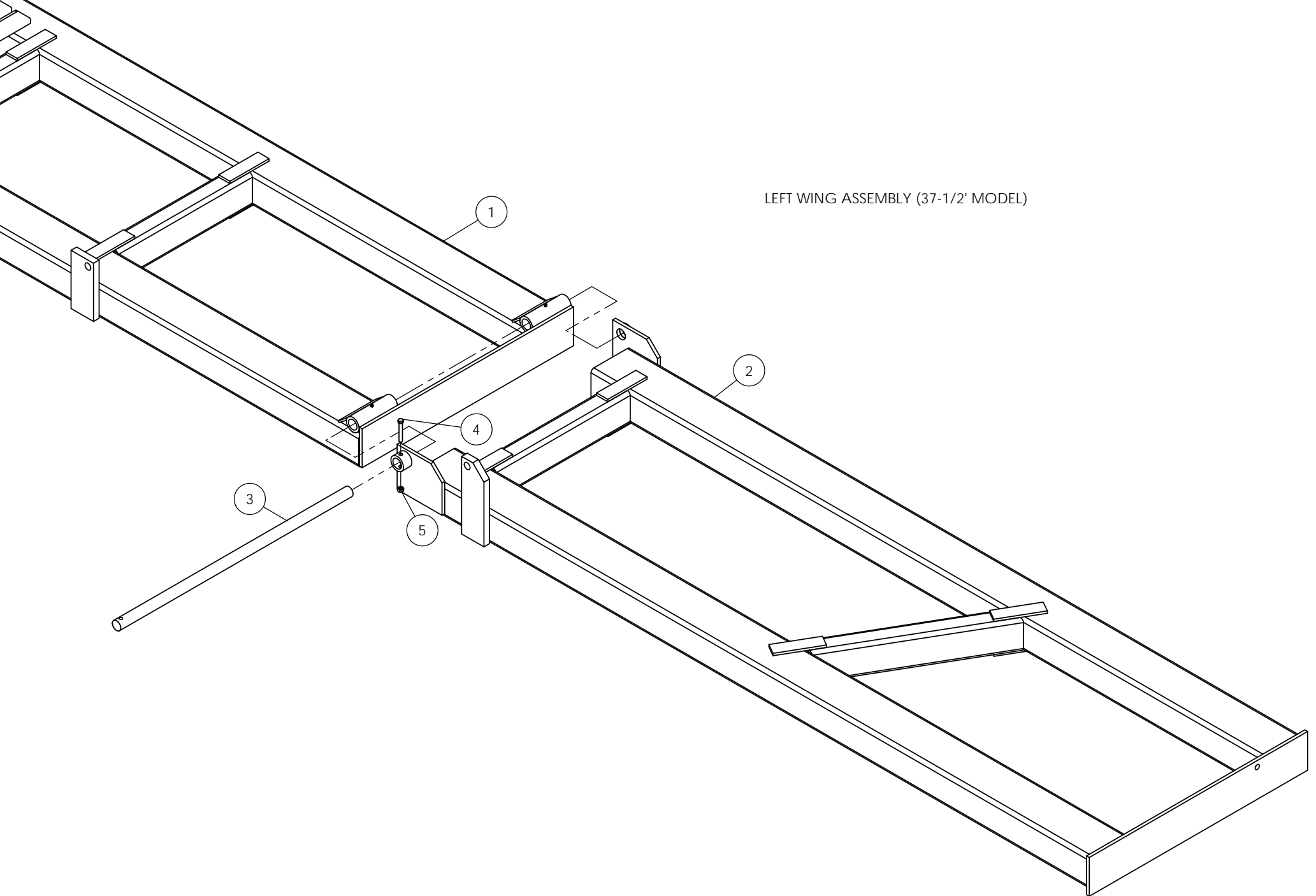


REFERENCE# 1100A007	DATE 05/13/08	REV 03/20/13 AU
------------------------	------------------	--------------------

ATTACHING THE RIGHT WING - 32-1/2' TOOLBAR

NOTES:

ITEM	QTY	PART#	DESCRIPTION
1	1	802034	MAINFRAME (15'-32' MODELS)
2	1	802040	110" - RIGHT WING
3	2	101140	7/16-14 X 3" HEX BOLT - PLT, GR5
4	2	602130	Ø1 X 10" - HINGE PIN
5	2	101221	7/16" LOCK WASHER - PLT,
6	2	101212	7/16" HEX NUT - PLT,

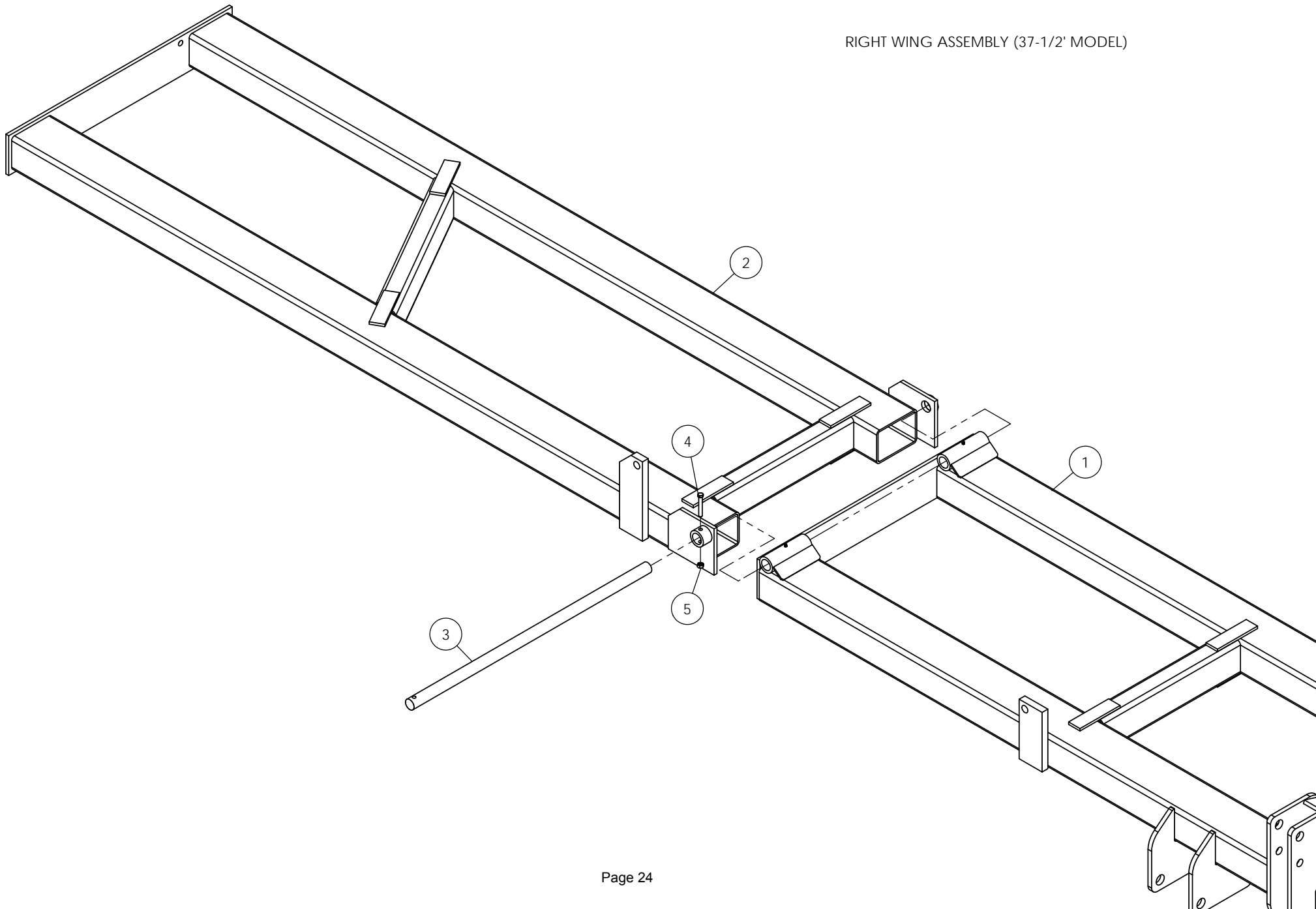


LEFT WING ASSEMBLY (37-1/2' MODEL)

NOTES:

ITEM NO.	QTY.	PART NUMBER	Description1
1	1	768020805	MAIN FRAME
2	1	768020803	LEFT WING WELDMENT
3	1	761100061	HING PIN
4	1	600356132	BOLT 7/16" X 3" GR. 5
5	1	600366100	STOVER LOCKNUT TYPE C - 7/16" - UNC

RIGHT WING ASSEMBLY (37-1/2' MODEL)

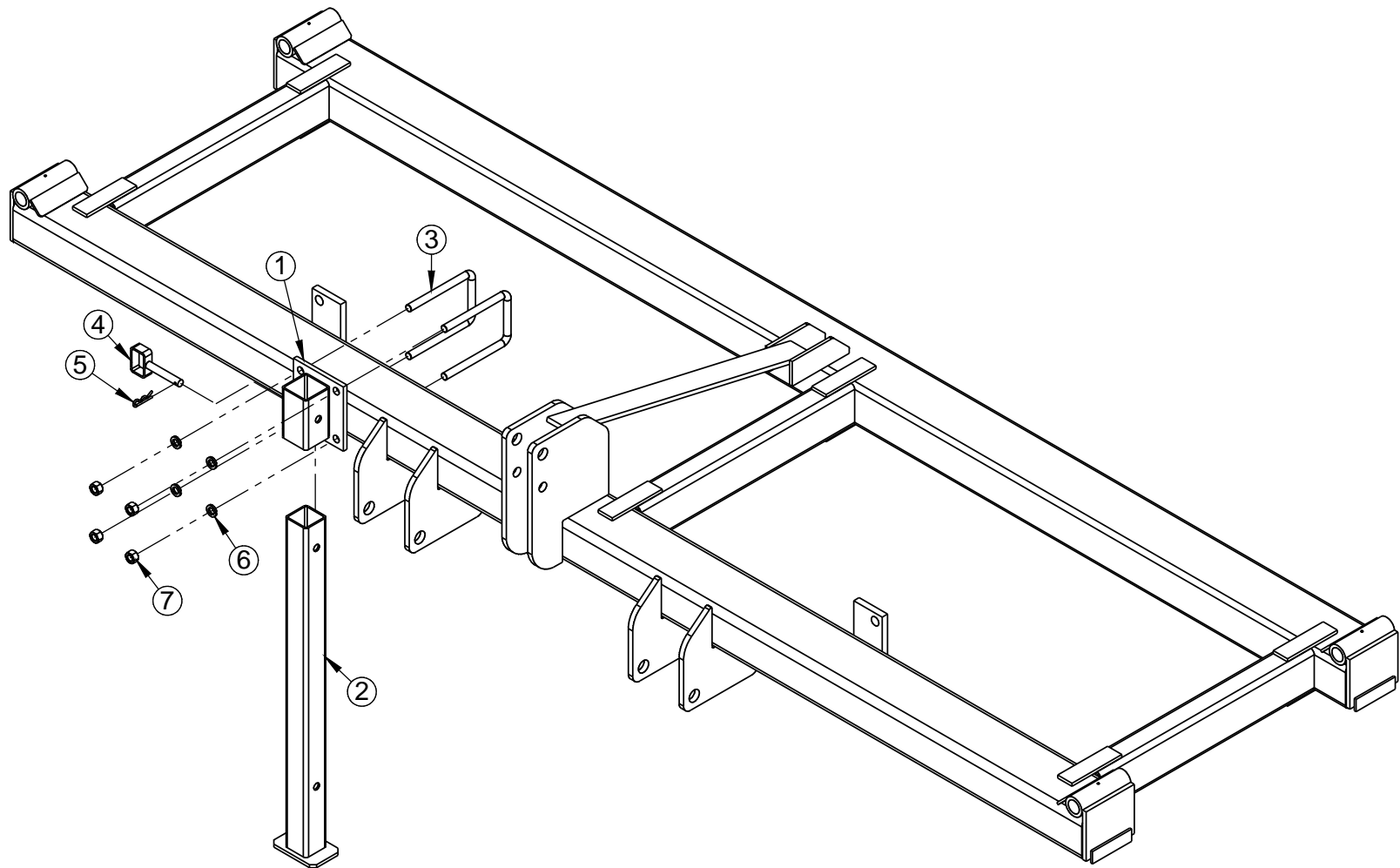


RIGHT WING ASSEMBLY (37-1/2' MODEL)

NOTES:

ITEM NO.	QTY.	PART NUMBER	Description1
1	1	768020805	MAIN FRAME
2	1	768020804	RIGHT WING WELDMENT
3	1	761100061	HING PIN
4	1	600356132	BOLT 7/16" X 3" GR. 5
5	1	600366100	STOVER LOCKNUT TYPE C - 7/16" - UNC

ATTACHING THE JACK STAND WELDMENT



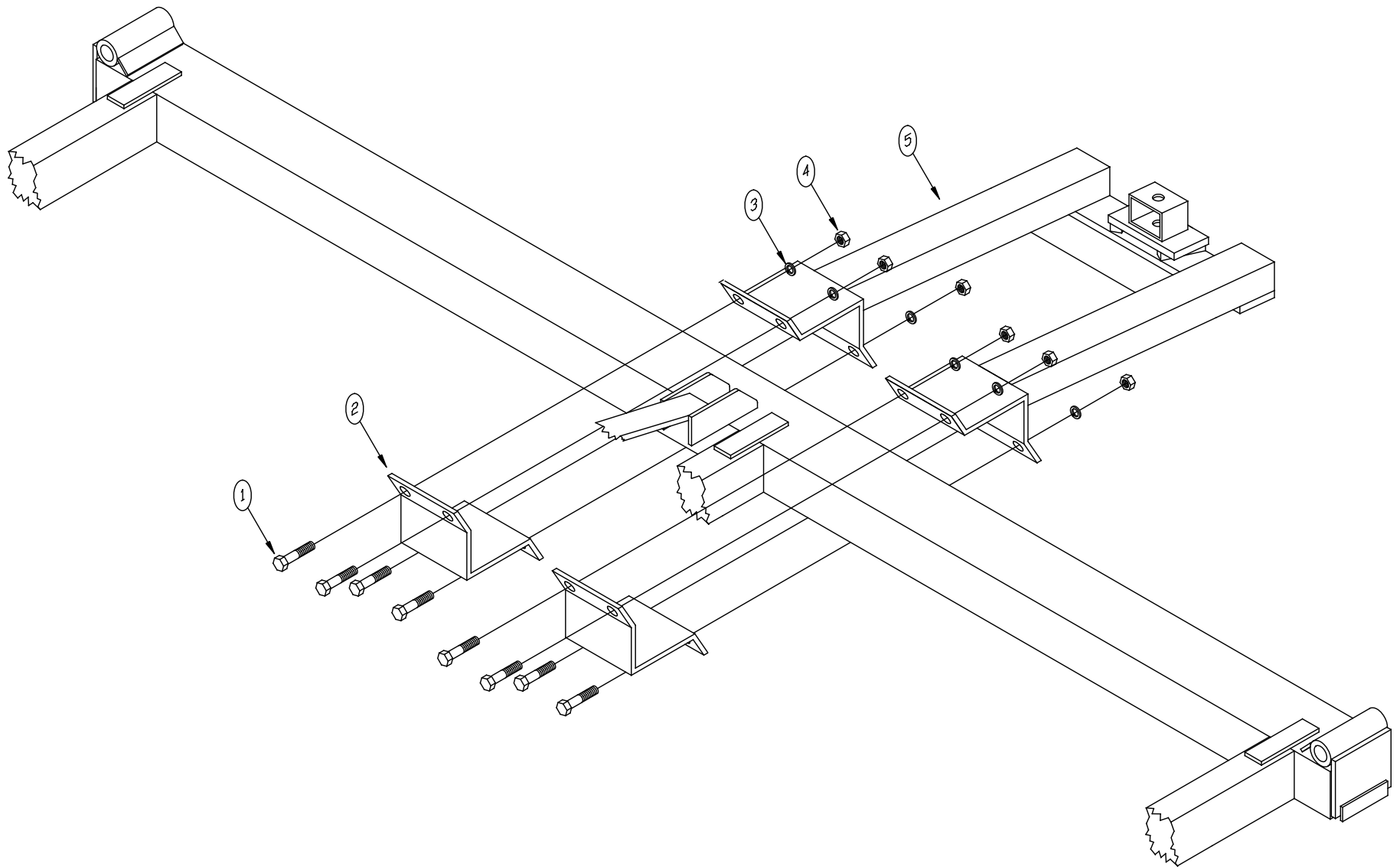
ATTACHING THE JACK STAND WELDMENT

ITEM NO.	PART NUMBER	Description1	QTY.
1	768022050	JACK STAND MOUNT WELDMENT	1
2	768022051	JACK STAND LEG WELDMENT	1
3	76101317	3/4"-10 X 5" X 8.5" U-BOLT	2
4	76801666	Jack Stand Pin Weldment	1
5	600383011	3/16" HAIR PIN	1
6	600382055	LOCKWASHER 3/4"	4
7	600365019	STANDARD NUT 3/4"	4

NOTE: POSITION JACK STAND SO IT DOES
NOT INTERFERE WITH ROW UNITS

JACK ATTACHES TO THE FRONT
MAINFRAME TUBE

ATTACHING THE NURSE TRAILER HITCH



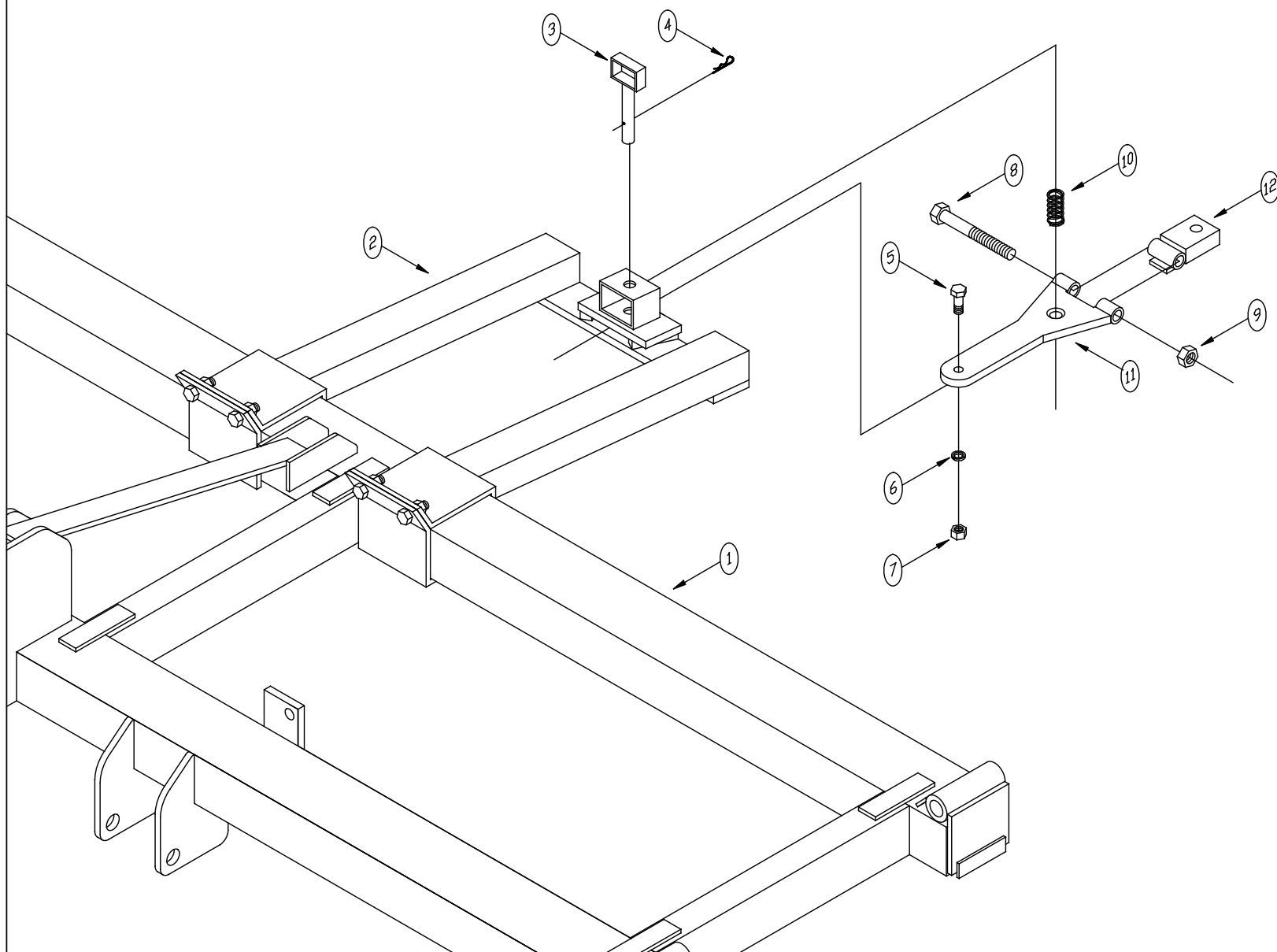
REFERENCE# 1100A008	DATE 05/15/08	REV 03/20/13 AU
------------------------	------------------	--------------------

ATTACHING THE NURSE TRAILER HITCH

NOTES: HITCH ATTACHES TO THE REAR
MAINFRAME TUBE

ITEM	QTY	PART#	DESCRIPTION
1	8	101173	3/4-10 X 3" HEX BOLT - PLT., GR5
2	2	400224	1/2 X 6 X 15" - SADDLE CLAMP
3	8	101224	3/4" LOCK WASHER - PLT.
4	8	101215	3/4-10 HEX NUT - PLT.
5	1	802041	NURSE TRAILER HITCH

ATTACHING THE DRAWBAR AND CLEVIS

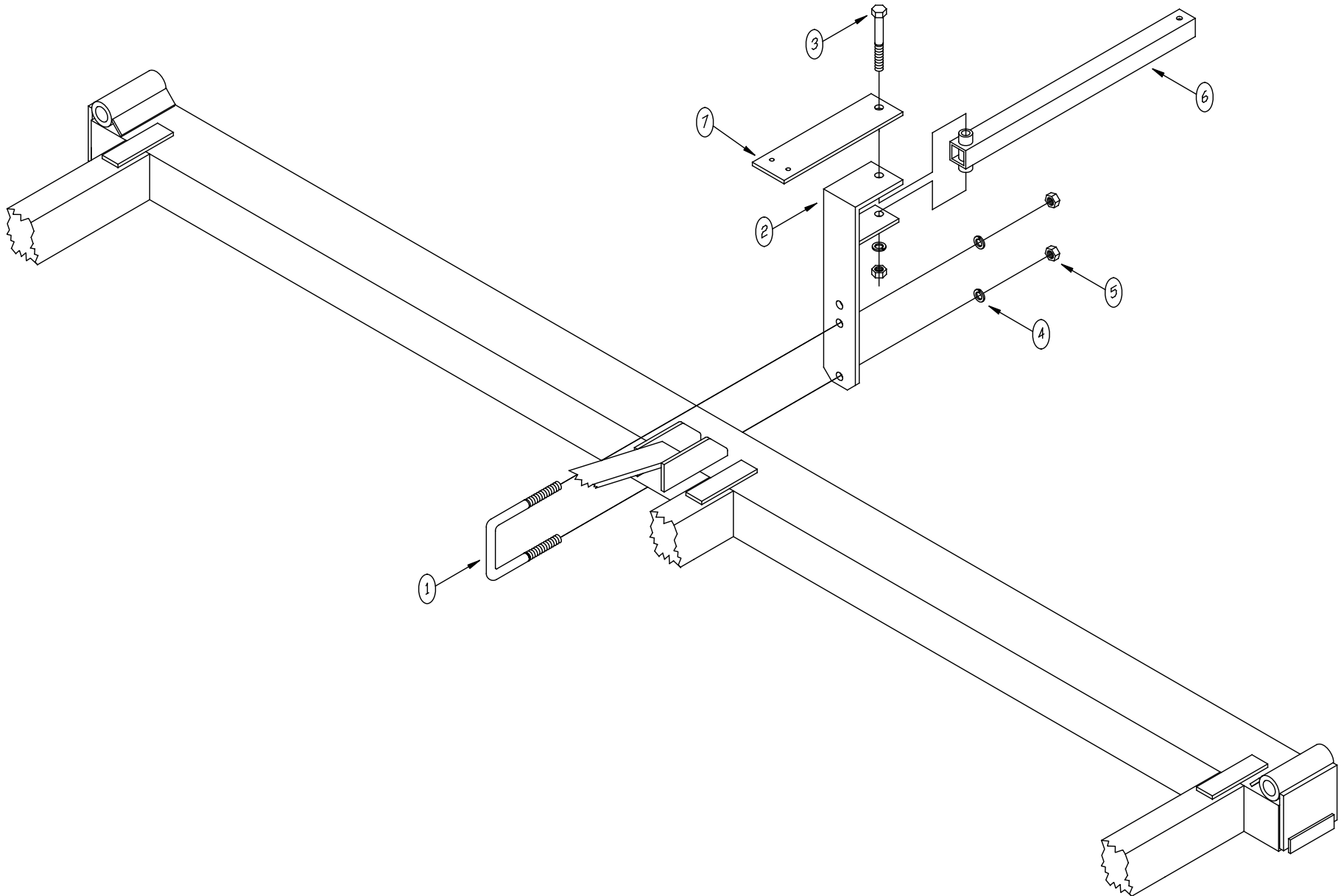


ATTACHING THE DRAWBAR AND CLEVIS

NOTES:

ITEM	QTY	PART#	DESCRIPTION
1	1	802034	MAINFRAME (15'-32' MODELS)
1	1	8020805	MAINFRAME (37-1/2' MODEL) (NOT SHOWN)
2	1	802041	NURSE TRAILER HITCH
3	1	801195	Ø1.00 X 6" WELDED PIN
4	1	101266	3/16" HAIR PIN
5	1	101171	3/4-10 X 2" HEX BOLT - PLT, GR5
6	1	101224	3/4" LOCK WASHER - PLT,
7	1	101215	3/4-10 HEX NUT - PLT,
8	1	101204	1-8 X 8" HEX BOLT - PLT, GR5
9	1	101461	1-8 TOP LOCK NUT - PLT,
10	1	101330	COMPRESSION SPRING
11	1	801189	DRAWBAR
12	1	801771	DRAWBAR CLEVIS

ATTACHING THE SINGLE REGULATOR BRACKET



ATTACHING THE SINGLE REGULATOR BRACKET

NOTES:

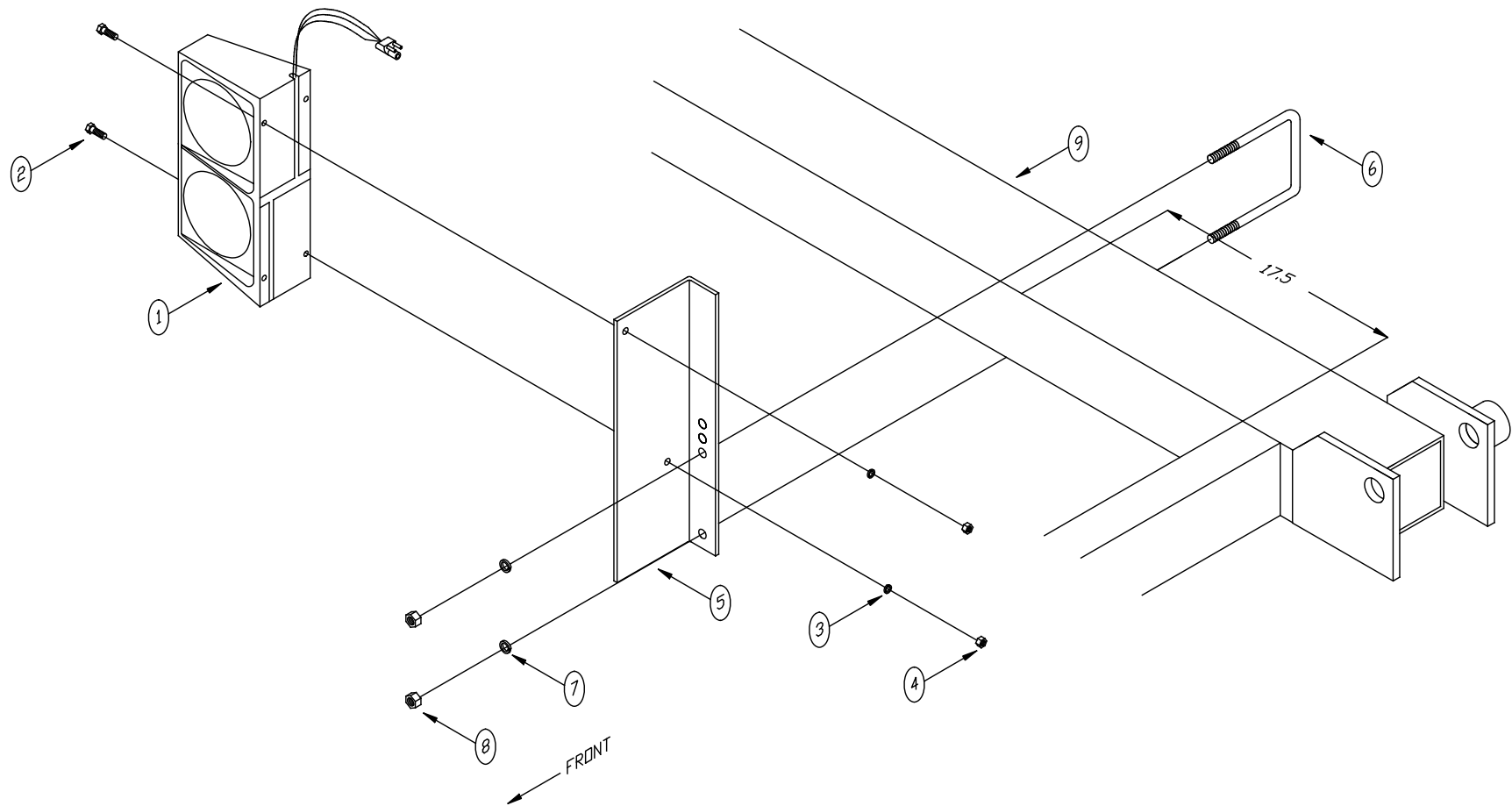
ITEM	QTY	PART#	DESCRIPTION
1	1	101317	3/4-10 X 5 X 8-1/2" U-BOLT - PLT.
2	1	802042	SWING ARM MOUNTING BRACKET
3	1	101179	3/4-10 X 6" HEX BOLT - PLT. GR5
4	3	101224	3/4" LOCK WASHER - PLT.
5	3	101215	3/4-10 HEX NUT - PLT.
6	1	801267	SWING ARM
7	1	400225	B9500 REGULATOR MOUNTING BRACKET

MAINFRAME PARTIALLY REMOVED FOR PICTURE CLARITY.

ITEM #7 IS OPTIONAL.

BRACKET ATTACHES TO THE REAR MAINFRAME TUBE.

*ATTACHING THE RIGHT LIGHT BRACKETS AND
LIGHTS*



ATTACHING THE RIGHT LIGHT BRACKETS AND LIGHTS

NOTES:

<i>ITEM</i>	<i>QTY</i>	<i>PART#</i>	<i>DESCRIPTION</i>
<i>1</i>	<i>1</i>	<i>500015</i>	<i>RIGHT HAND LIGHT UNIT</i>
<i>2</i>	<i>2</i>	<i>101102</i>	<i>1/4-20 X 1" HEX BOLT - PLT, GR5</i>
<i>3</i>	<i>2</i>	<i>101218</i>	<i>1/4" LOCK WASHER - PLT,</i>
<i>4</i>	<i>2</i>	<i>101209</i>	<i>1/4-20 HEX NUT - PLT,</i>
<i>5</i>	<i>1</i>	<i>76500038</i>	<i>RIGHT LIGHT MOUNTING BRACKET</i>
<i>6</i>	<i>1</i>	<i>101417</i>	<i>3/8-16 X 5 X 8-1/2" U-BOLT - PLT,</i>
<i>7</i>	<i>2</i>	<i>101220</i>	<i>3/8" LOCK WASHER - PLT,</i>
<i>8</i>	<i>2</i>	<i>101211</i>	<i>3/8-16 HEX NUT - PLT,</i>
<i>9</i>	<i>1</i>	<i>---</i>	<i>RIGHT WING</i>

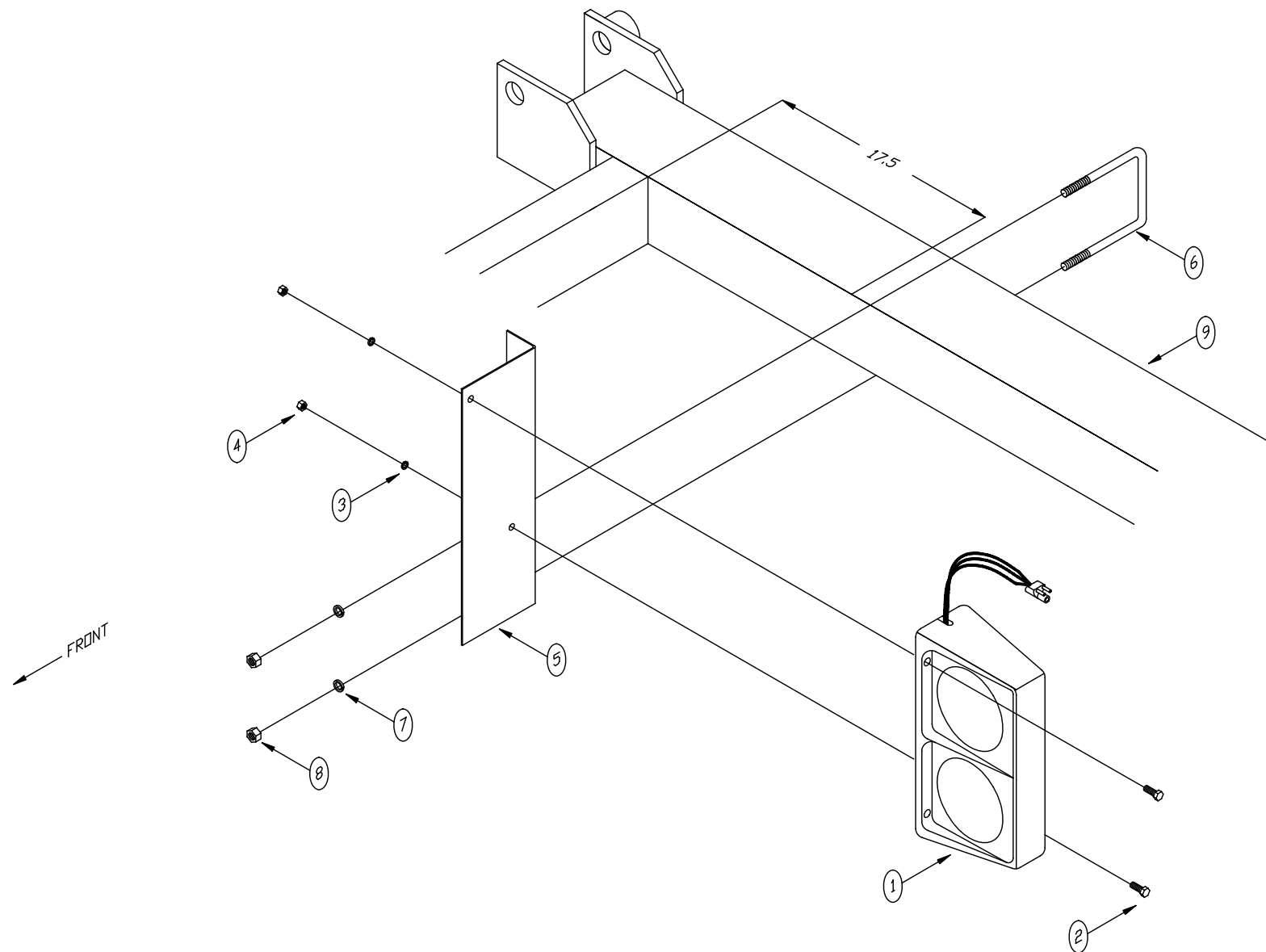
*THE RED AND YELLOW LIGHTS SHOULD
BE VISIBLE WHEN VIEWED FROM
BEHIND THE IMPLEMENT. ONLY THE
YELLOW LIGHT SHOULD BE VISIBLE
FROM THE FRONT.*

*ATTACH THE LIGHTS SO THAT THE
YELLOW LIGHT IS ON THE BOTTOM AND
THE RED LIGHT IS ON TOP.*

*ATTACH THE LIGHT MOUNTING BRACKETS
TO THE REAR TUBE OF THE WING
17-1/2" FROM THE SUPPORT TUBE AS
SHOWN IN THE PICTURE.*

*WING PARTIALLY REMOVED FOR
PICTURE CLARITY.*

ATTACHING THE LEFT LIGHT BRACKETS AND LIGHTS



ATTACHING THE LEFT LIGHT BRACKETS AND LIGHTS

NOTES:

ITEM	QTY	PART#	DESCRIPTION
1	1	500016	LEFT HAND LIGHT UNIT
2	2	101102	1/4-20 X 1" HEX BOLT - PLT, GR5
3	2	101218	1/4" LOCK WASHER - PLT,
4	2	101209	1/4-20 HEX NUT - PLT,
7	1	7650039	LEFT LIGHT MOUNTING BRACKET
6	1	101417	3/8-16 X 5 X 8-1/2" U-BOLT - PLT,
7	2	101220	3/8" LOCK WASHER - PLT,
8	2	101211	3/8-16 HEX NUT - PLT,
9	1	---	LEFT WING

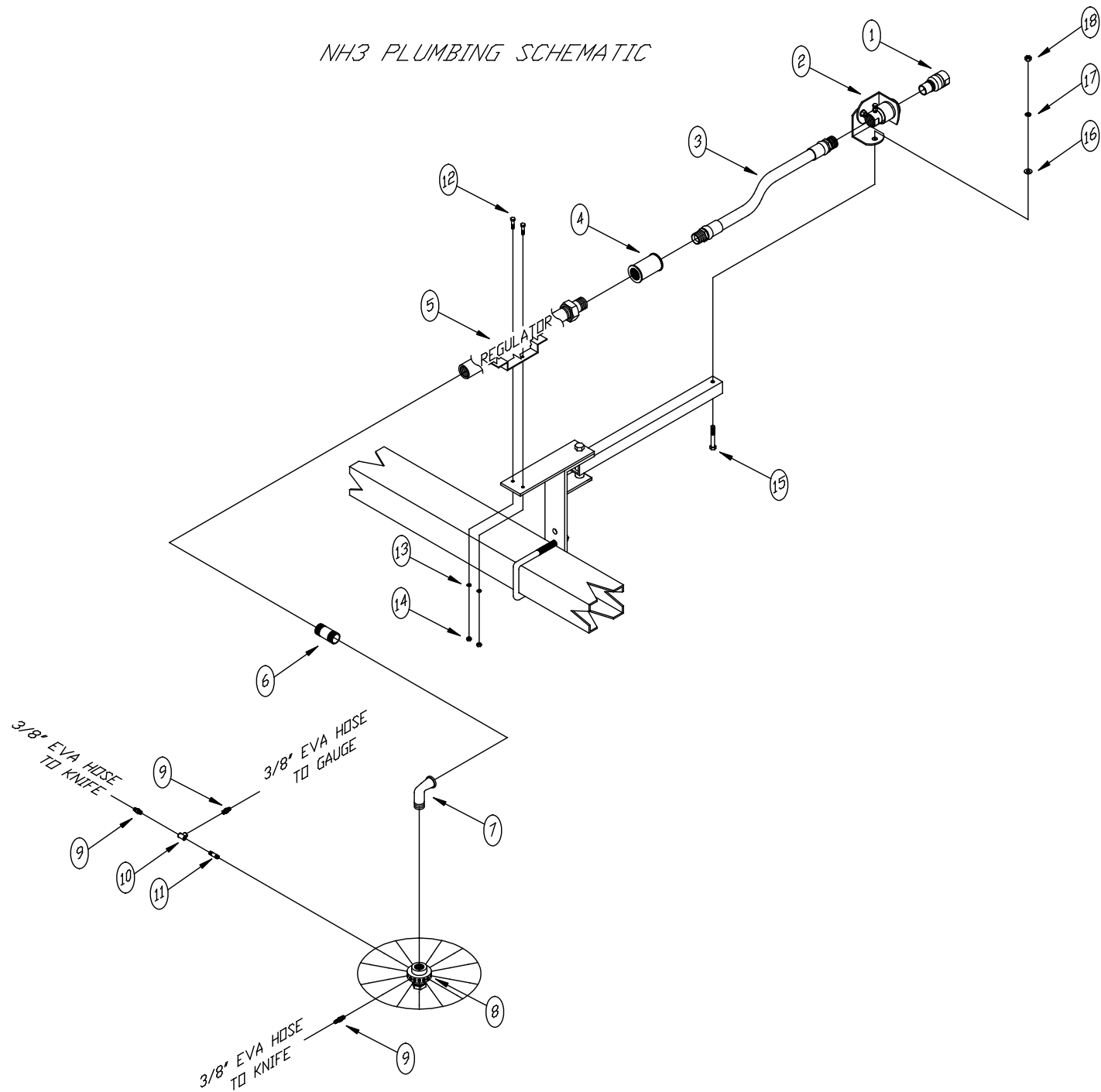
THE RED AND YELLOW LIGHTS SHOULD BE VISIBLE WHEN VIEWED FROM BEHIND THE IMPLEMENT. ONLY THE YELLOW LIGHT SHOULD BE VISIBLE FROM THE FRONT.

ATTACH THE LIGHTS SO THAT THE YELLOW LIGHT IS ON THE BOTTOM AND THE RED LIGHT IS ON TOP.

ATTACH THE LIGHT MOUNTING BRACKETS TO THE REAR TUBE OF THE WING 17-1/2" FROM THE SUPPORT TUBE AS SHOWN IN THE PICTURE.

WING PARTIALLY REMOVED FOR PICTURE CLARITY.

NH3 PLUMBING SCHEMATIC



NH3 PLUMBING SCHEMATIC

NOTES:

ITEM	QTY	PART#	DESCRIPTION
1	1	700278	1-1/4" MALE COUPLER TIP (NH3)
2	1	700276	1-1/4" QUICK COUPLER ASSEMBLY
3	1	700274	1-1/4" AA HOSE X 32" LONG
4	1	700275	1-1/4" SCHEDULE 80 COUPLER
5	1	700273	NH3/B9500 METER W/ HYDRAULIC SHUT-OFF
6	1	700257	1" CLOSE NIPPLE - BLACK PIPE
7	1	700256	1" ST. ELBOW - BLACK PIPE
8	1	700272	NH3 MANIFOLD - 14 OUTLET
9	13	700277	1/4 MNPT X 3/8" HOSE BARB
10	1	700215	1/4" FNPT TEE - BLACK PIPE
11	1	700226	1/4" MNPT NIPPLE - 1-1/2" LONG
12	2	101125	3/8-16 X 1" HEX BOLT
13	2	101220	3/8" LOCK WASHER
14	2	101211	3/8-16 HEX NUT
15	1	101152	1/2-13 X 3-1/2" HEX BOLT
16	1	101231	1/2" FLAT WASHER
17	1	101222	1/2" LOCK WASHER
18	1	101213	1/2-13 HEX NUT
**	1	700211	1/4" MNPT X 1/2" LONG MANIFOLD PLUG

NOTE THAT A TWELVE ROW UNIT WILL NEED 1 MANIFOLD OUTLET PLUG, PART #700211 AND 13 HOSE BARBS ITEM 9.

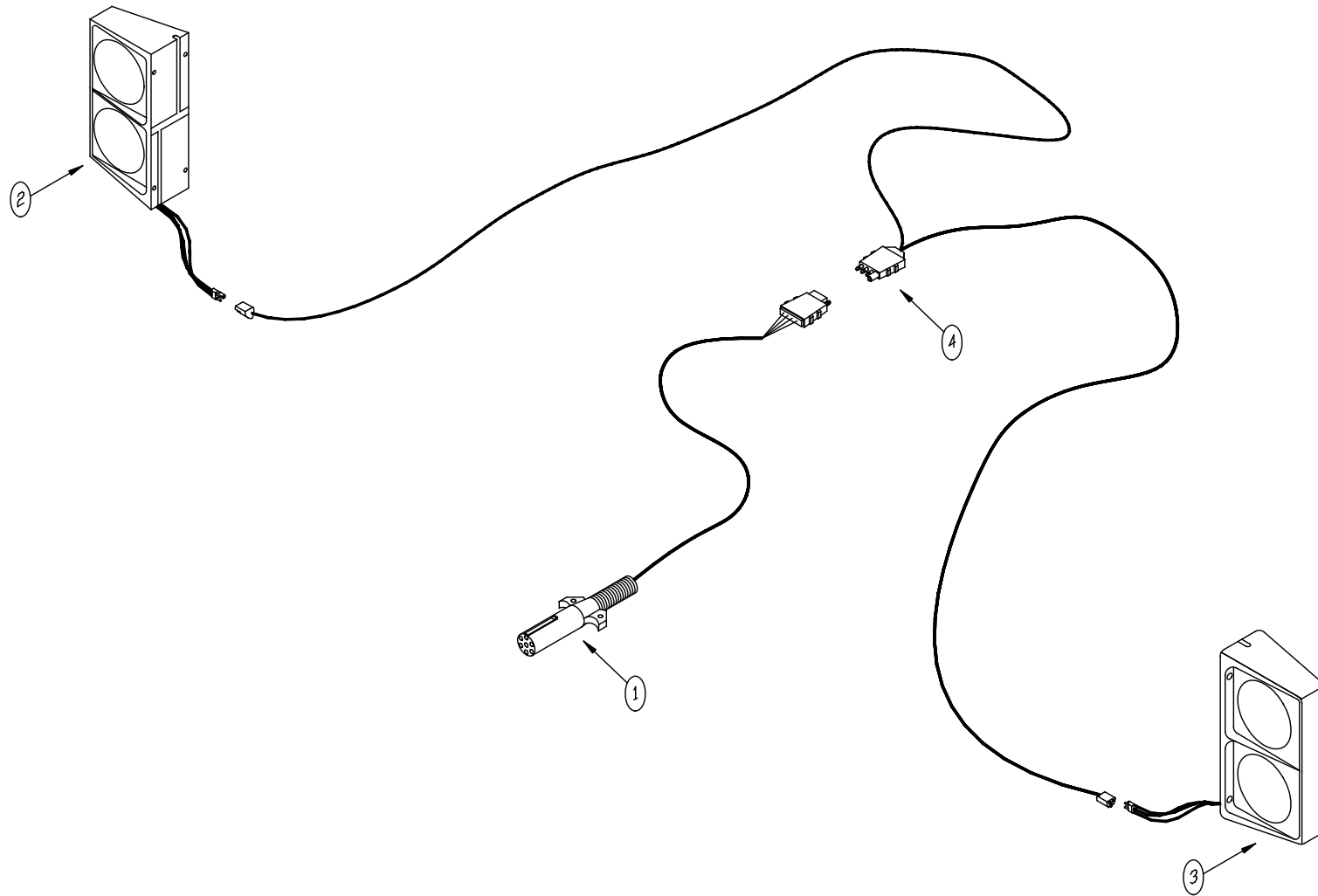
ITEMS 10 AND 11 WILL NOT BE USED ON A TWELVE ROW UNIT.

NOTE THAT THE 3/8" EVA HOSES ARE SOLD BY THE FOOT AND CARRY A PART NUMBER OF 700120.

NOTE THAT THE 1/2" EVA HOSES ARE SOLD BY THE FOOT AND CARRY A PART NUMBER OF 700117.

EVA HOSE MAY BE PURCHASED BY THE ROLL USING PART NUMBER 700209 FOR A 250' ROLL OF 3/8" HOSE OR PART NUMBER 700210 FOR A 250' ROLL OF 1/2" HOSE.

WIRING HARNESS FOR THE LIGHTS

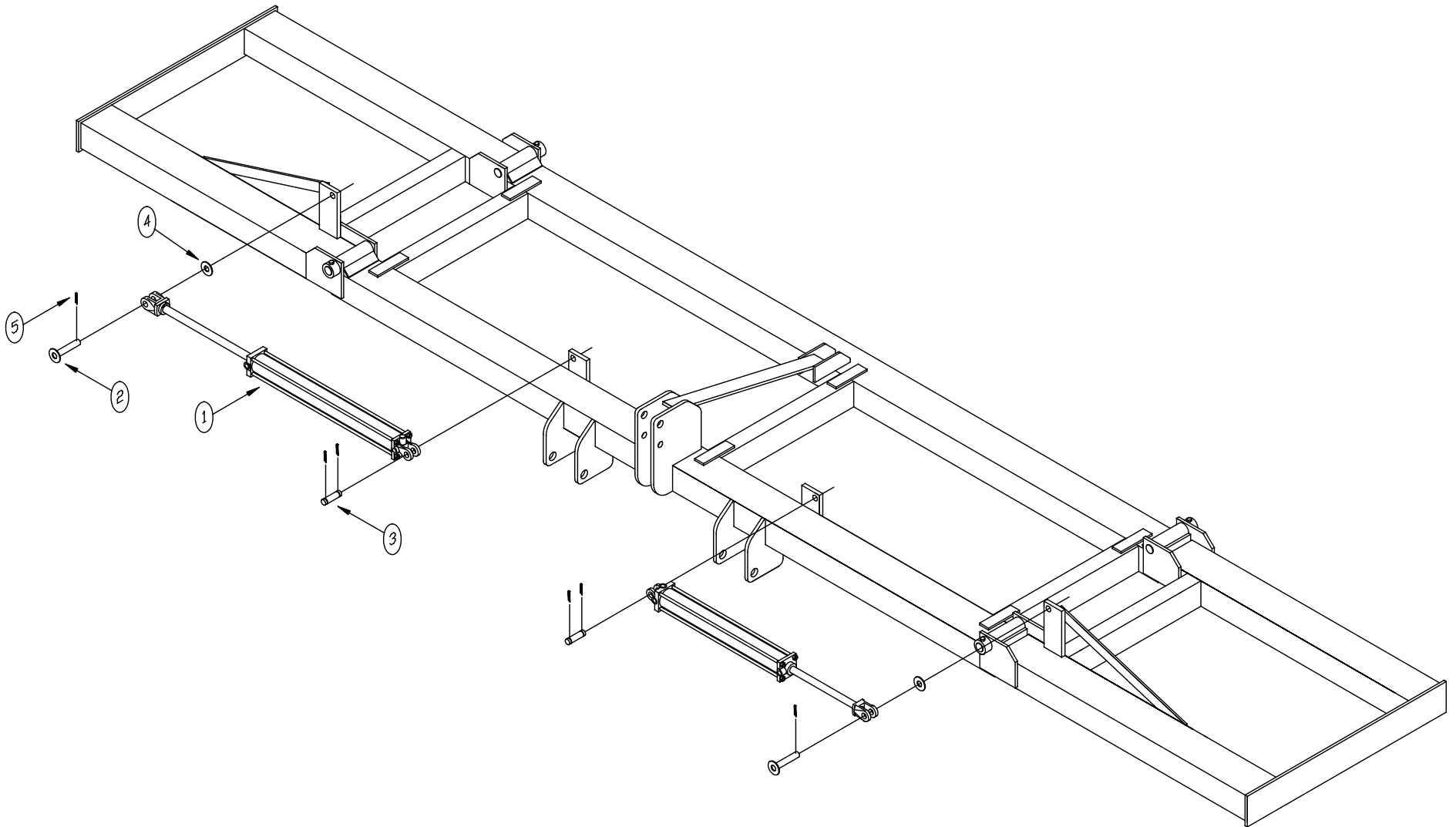


WIRING HARNESS FOR THE LIGHTS

NOTES:

<i>ITEM</i>	<i>QTY</i>	<i>PART#</i>	<i>DESCRIPTION</i>
<i>1</i>	<i>1</i>	<i>500018</i>	<i>7 POLE PLUG AND HARNESS ASSEMBLY</i>
<i>2</i>	<i>1</i>	<i>500015</i>	<i>RIGHT LIGHT UNIT</i>
<i>3</i>	<i>1</i>	<i>500016</i>	<i>LEFT LIGHT UNIT</i>
<i>4</i>	<i>1</i>	<i>500019</i>	<i>Y CABLE HARNESS ASSEMBLY</i>

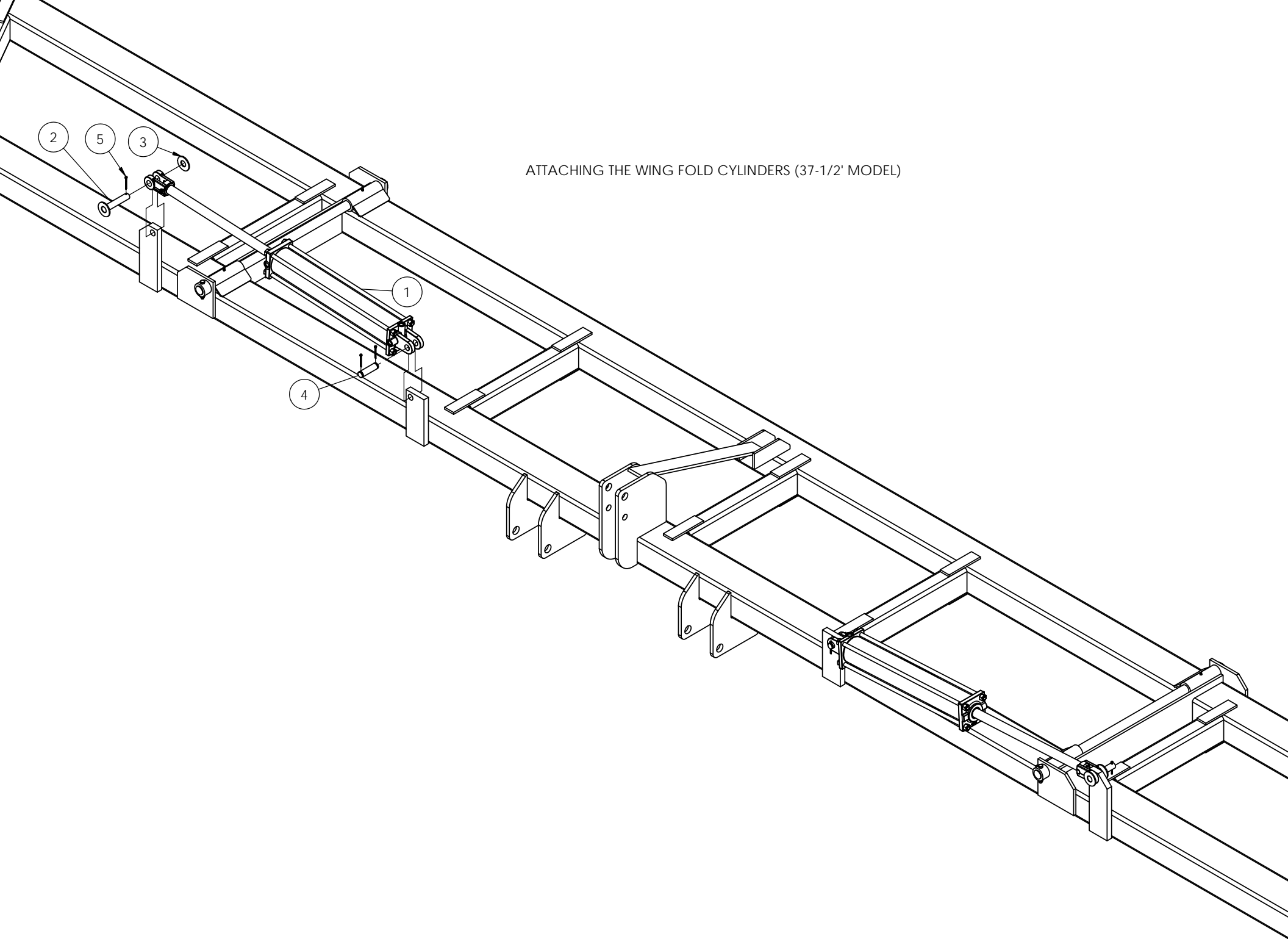
ATTACHING THE WING FOLD CYLINDERS



ATTACHING THE WING FOLD CYLINDERS

NOTES:

ITEM	QTY	PART#	DESCRIPTION
1	2	204007	4X16 HYDRAULIC CYLINDER-30, 32-1/2, 37-1/2'
1	-	204005	3X16 HYDRAULIC CYLINDER - 20, 24'
2	2	801613	Ø1.00 X 5-1/4" WELDED CYLINDER PIN
3	2	602136	Ø1.00 X 3-5/8" CYLINDER PIN
4	2	101235	1" FLAT WASHER
5	6	101347	3/16 X 2" COTTER PIN



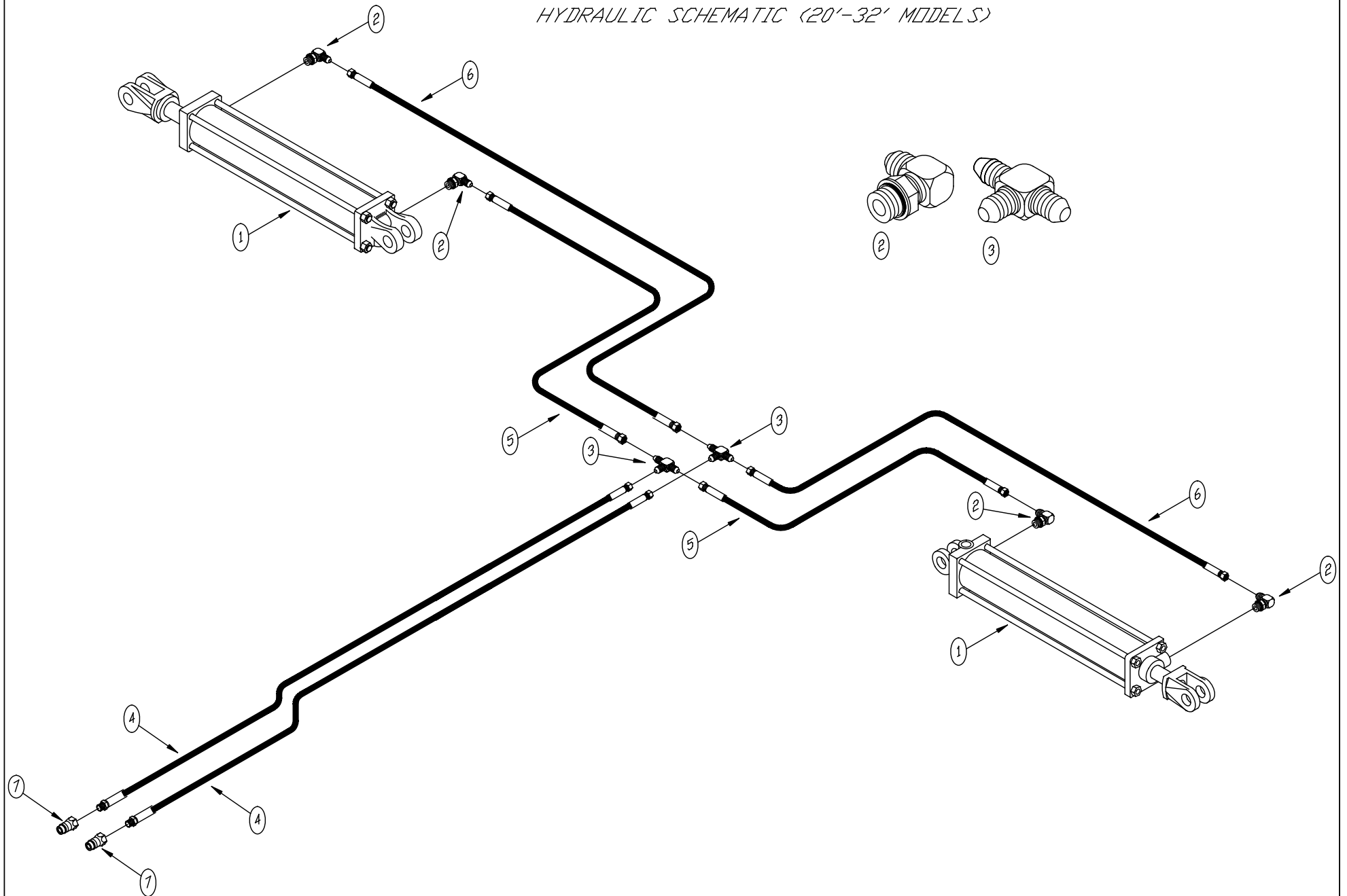
ATTACHING THE WING FOLD CYLINDERS (37-1/2' MODEL)

ATTACHING THE WING FOLD CYLINDERS (37-1/2' MODEL)

NOTES:

ITEM NO.	Cylinder Assembly/QTY.	PART NUMBER	Description1
1	2	76204010	4" X 24" HYDRAULIC CYLINDER
2	2	76801613	Cylinder Pin Weldment
3	2	600381018	FLATWASHER 1"
4	2	76602136	CYLINDER PIN
5	6	76101347	3/16" X 2" COTTER PIN

HYDRAULIC SCHEMATIC (20'-32' MODELS)



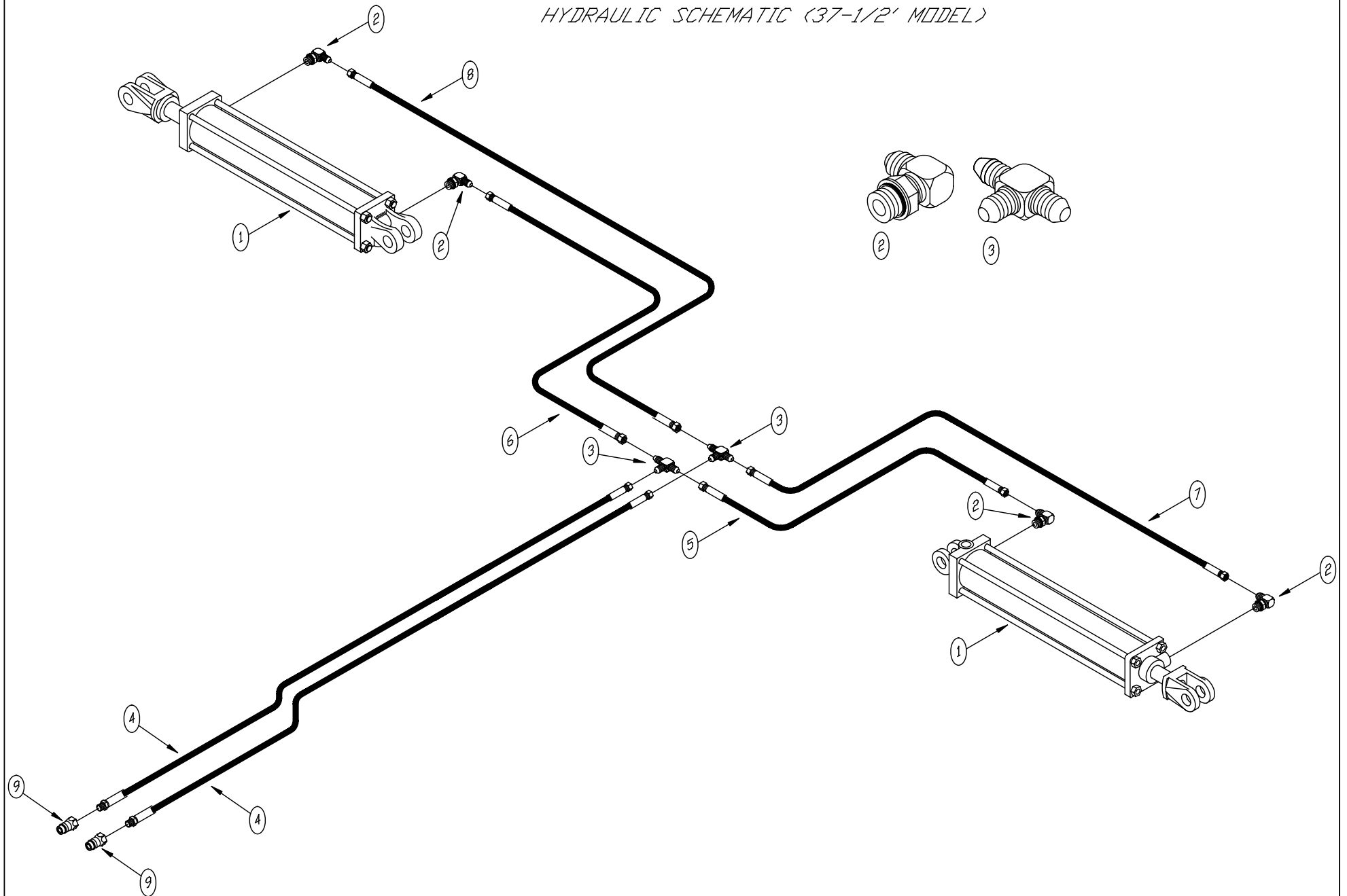
HYDRAULIC SCHEMATIC (20'-32' MODELS)

NOTES:

ITEM	QTY	PART#	DESCRIPTION
1	2	204007	4X16 HYDRAULIC CYLINDER-30', 32-1/2'
1	2	204005	3X16 HYDRAULIC CYLINDER - 20', 24'
2	4	201001	#8 MALE O-RING X #6 MJIC 90°
3	2	201009	#6 MJIC TEE
4	2	202044	1/4 X 48" X #6 FJIC X 1/2 MNPT
5	2	202058	1/4 X 42" X #6 FJIC X #6 FJIC
6	2	202256	1/4 X 62" X #6 FJIC X #6 FJIC
7	2	600470110	HYDRAULIC QUICK COUPLER

DO NOT USE TEFLON TAPE OR
THREAD COMPOUND ON JIC FITTINGS.
USE TEFLON TAPE OR THREAD
COMPOUND ONLY ON TAPERED PIPE
FITTINGS.

HYDRAULIC SCHEMATIC (37-1/2' MODEL)



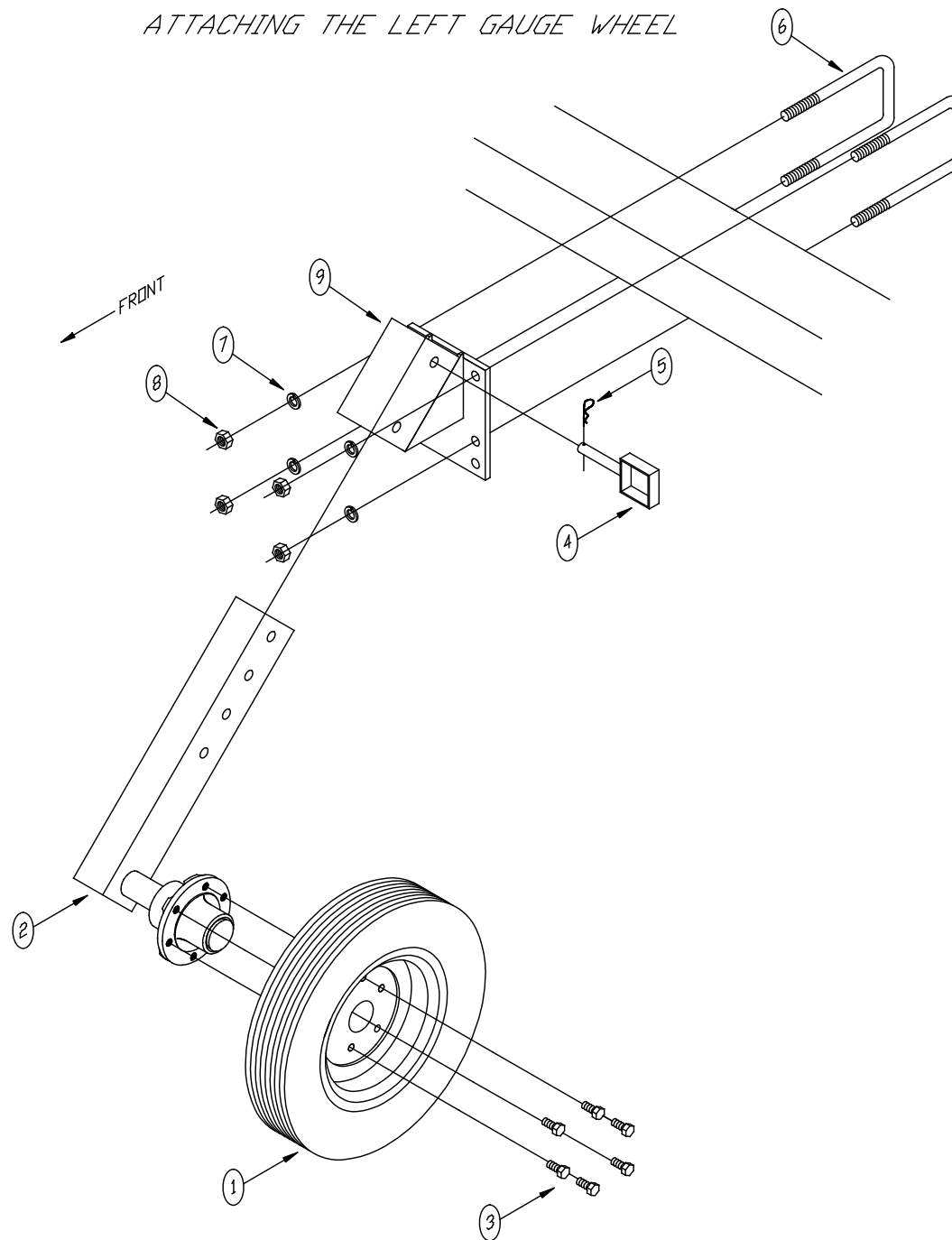
HYDRAULIC SCHEMATIC (37-1/2' MODEL)

NOTES:

ITEM	QTY	PART#	DESCRIPTION
1	2	204010	4 X 24 HYDRAULIC CYLINDER - 37-1/2'
2	4	201001	#8 MALE O-RING X #6 MJIC 90°
3	2	201009	#6 MJIC TEE
4	2	202044	1/4 X 48" X #6 FJIC X 1/2 MNPT
5	1	202042	1/4 X 46" X #6 FJX X #6 FJX HOSE
6	1	202089	1/4 X 59" X #6 FJX X #6 FJX HOSE
7	1	202006	1/4 X 72" X #6 FJX X #6 FJX HOSE
8	1	202049	1/4 X 86" X #6 FJX X #6 FJX HOSE
9	2	600470110	HYDRAULIC QUICK COUPLER

DO NOT USE TEFLON TAPE OR
THREAD COMPOUND ON JIC FITTINGS.
USE TEFLON TAPE OR THREAD
COMPOUND ONLY ON TAPERED PIPE
FITTINGS.

ATTACHING THE LEFT GAUGE WHEEL



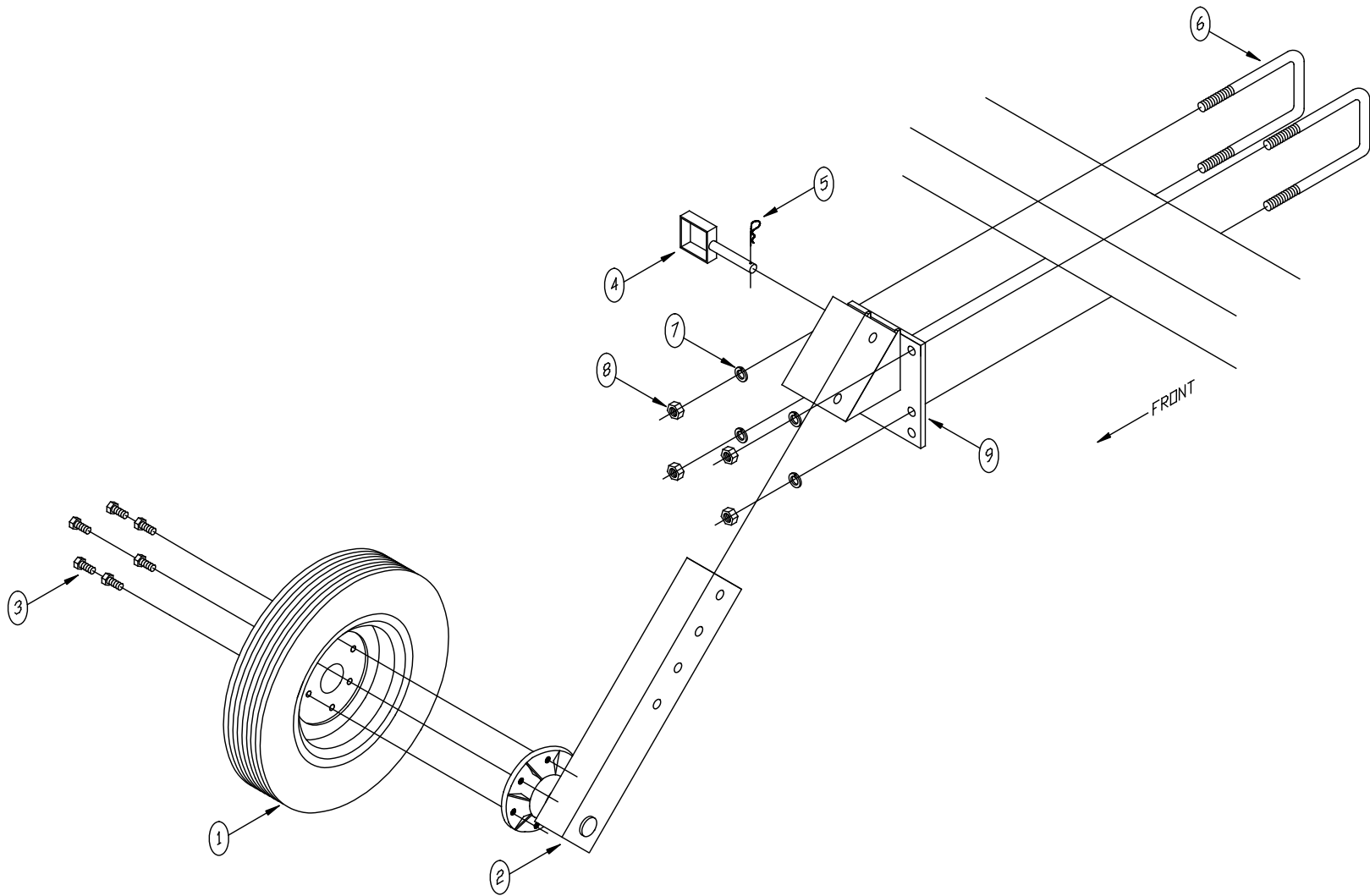
ATTACHING THE LEFT GAUGE WHEEL

NOTES:

ITEM	QTY	PART#	DESCRIPTION
1	1	301259	9.5L15 8 PLY TIRE & 6X15-6 HOLE WHEEL ASS.
2	1	763012661	LEFT GAUGE WHEEL ASSEMBLY
3	6	301151	9/16-18 UNF. X 1-1/8" - LUG BOLT
4	1	802046	GAUGE WHEEL PIN
5	1	101265	1/4 X 2" - COTTER PIN
6	2	101316	3/4-10 X 7 X 9" - U-BOLT PLT.
7	4	101224	3/4" LOCK WASHER - PLT.
8	4	101215	3/4-10 HEX NUT - PLT.
9	1	802045	GAUGE WHEEL MOUNTING BRACKET

THE GAUGE WHEEL MOUNTING BRACKET (ITEM #9) ATTACHES TO THE FRONT TUBE OF THE WING.

ATTACHING THE RIGHT GAUGE WHEEL



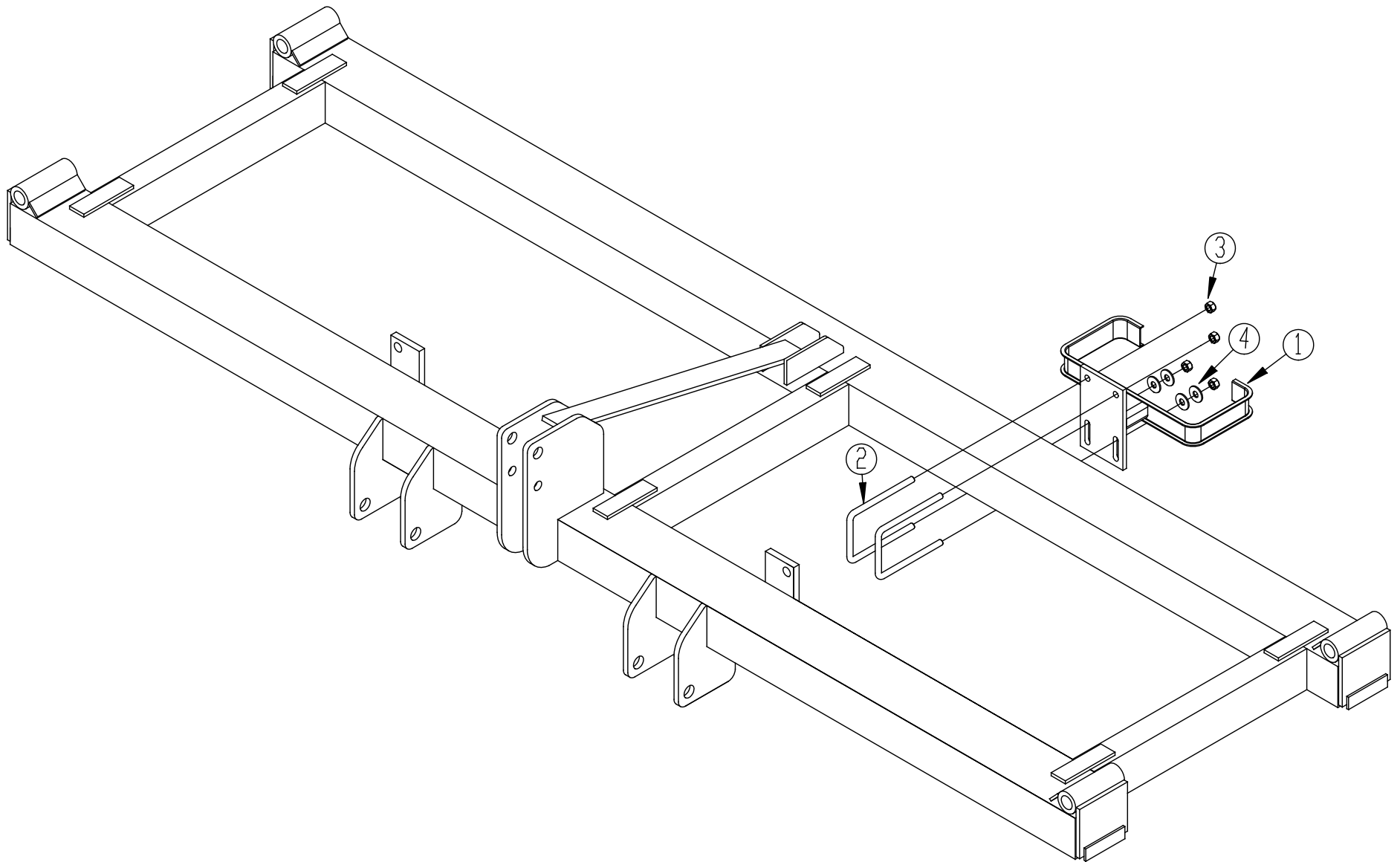
ATTACHING THE RIGHT GAUGE WHEEL

NOTES:

ITEM	QTY	PART#	DESCRIPTION
1	1	301259	9.5L15 8 PLY TIRE & 6X15-6 HOLE WHEEL ASS.
2	1	763012661	RIGHT GAUGE WHEEL ASSEMBLY
3	6	301151	9/16-18 UNF. X 1-1/8 - LUG BOLT
4	1	802046	GAUGE WHEEL PIN
5	1	101265	1/4 X 2" - COTTER PIN
6	2	101316	3/4-10 X 7 X 9" - U-BOLT PLT.
7	4	101224	3/4" LOCK WASHER - PLT.
8	4	101215	3/4-10 HEX NUT - PLT.
9	1	802045	GAUGE WHEEL MOUNTING BRACKET

THE GAUGE WHEEL MOUNTING BRACKET (ITEM #9) ATTACHES TO THE FRONT TUBE OF THE WING.

ATTACHING THE WASH TANK WELDMENT



ATTACHING THE WASH TANK WELDMENT

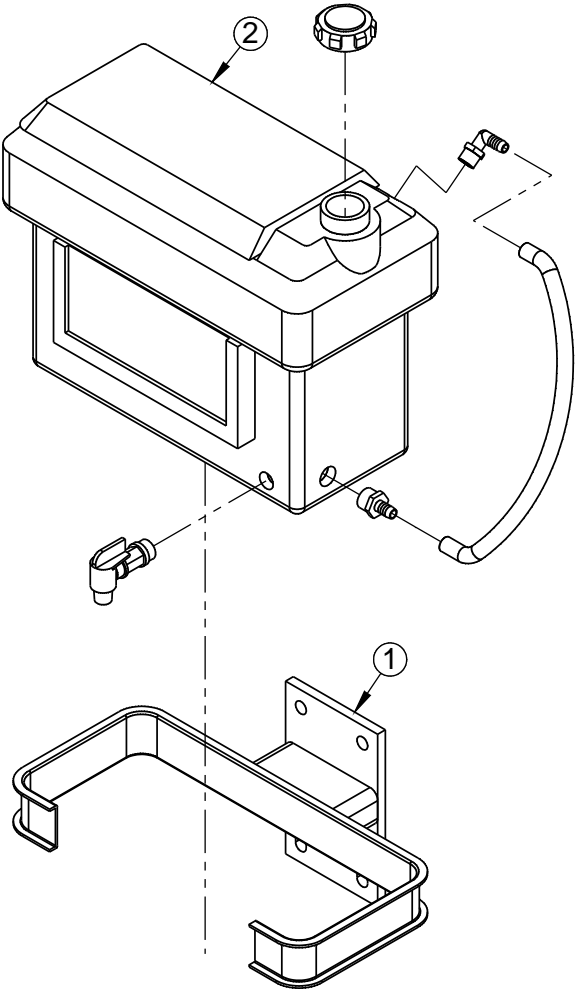
<i>ITEM</i>	<i>QTY</i>	<i>PART#</i>	<i>DESCRIPTION</i>
<i>1</i>	<i>1</i>	<i>768011021</i>	<i>WASH TANK BRACKET WELDMENT</i>
<i>2</i>	<i>2</i>	<i>76101312</i>	<i>5/8"-11 X 5" X 8.5" U-BOLT-PLT</i>
<i>3</i>	<i>4</i>	<i>600366031</i>	<i>STOVER LOCKNUT TYPE C - 5/8" -UNC</i>
<i>4</i>	<i>4</i>	<i>600381020</i>	<i>FLAT WASHER 5/8"</i>

*NOTES: POSITION BRACKET SO IT
DOES NOT INTERFERE WITH ROW UNITS*

*WASH TANK ATTACHES TO THE REAR
MAINFRAME TUBE*

ATTACHING THE WASH TANK

ITEM NO.	PART NUMBER	Description1	QTY.
1	768011021	WASH TANK BRACKET WELDMENT	1
2	767500030	WASH TANK - COMPLETE	1



Progressive Farm Products

19500 N 1425 East Road • Hudson, IL 61748-9450 • (309) 454-1564 • FAX (309) 452-1610

WARRANTY

Main Frame, Wings, Wheel Supports One (1) Year
All Other Components, except tiresOne (1) Year

Progressive Farm Products (PFP) warrants each new PFP product to be free from defects in material and workmanship. This warranty is in effect from the date of delivery to the original purchaser and is applicable only for the normal life expectancy of the machine or components, not to exceed the time periods listed above. Tires on PFP equipment are warranted through the respective tire manufacturer. Contact a dealer of the manufacturer in your local area.

Under no circumstances will it cover any merchandise or components thereof which, in the opinion of the company, has been subjected to negligent handling, misuse, alternation, an accident, or if repairs have been made with parts other than those obtainable through PFP.

Our obligation under this warranty shall be limited to repairing or replacing, free of charge to the original purchaser any part that in our judgment shall show evidence of such defect, provided further that such part shall be returned within thirty (30) days from date of failure to PFP through a dealer from whom the purchase was made, transportation charges prepaid.

This warranty shall not be interpreted to render us liable for injury or damages of any kind of nature, direct, consequential, or contingent to person or property. This warranty does not extend to loss of crops, loss because of delay or any expense of loss incurred for labor, supplies, substitute machinery, rental, or for any other reason.

There are no warranties, either expressed or implied, of merchantability of fitness for particular purpose intended or fitness for any other reason.

This warranty is subject to any existing conditions of supply, which may directly affect our ability to obtain materials or manufacture replacement parts.

PFP reserves the right to make improvements in design or changes in specifications at any time without incurring any obligations to owners of units previously sold.

No one is authorized to alter, modify, or enlarge this warranty nor the exclusions, limitations, and reservations.

**Progressive Farm Products Warranty does not include
cost of travel time, mileage, hauling, or labor.**

