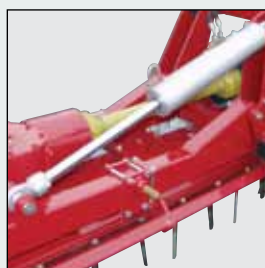


 **HOWARD**  
**POWER HARROW**  
**31 HY & 32 HY**



## Power Harrow

### HK 31 HY, HK 32 HY

The foldable Power Harrows from Howard are designed for big size farms and contractors to work behind tractors up to 220 kW (300HP). Based on Howard's more than 80 years experience on PTO driven soil working machines and more than 20 years experience on Power Harrows these machines represent the top end of what you can get.

Foldable Power Harrows from Howard are available in 4.00 m, 4.50 m, 5.00 m and 6.00 m working width.

The two beam folding frame arrangement ensures high stability, optimal connection with the tractor and troublefree operation. Due to the flexible concept of this machine you can decide between different Power Harrows and various gearbox systems.

This allows you to chose exactly the right machine for your operation.

- HK 31 HY with Selectatilt gearboxes for normal soil conditions and tractors up to 200 kW (270 HP)
- HK 32 HY with Selectatilt gearboxes or central leverchange gearbox for heavy and/or stony soils and tractors up to 220 kW (300 HP)

On all Types the Rotor shafts and tine carriers are forged in one piece from high quality steel.

The high grade taper roller bearings are fitted in exchangeable housings under the drive gear.

These and other design features guaranty a long life of the Howard Power Harrows. Four rotors per metre working width ensure a top working quality even under difficult conditions.

The wanted working depth can easily be adjusted. This adjustment allows the machine to run over stones without lifting the roller and gives an optimal depth control at the same time.

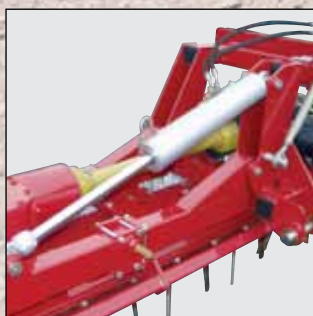
Different rollers, front and rear levelling bars, different Hitches and many other options are available for the foldable Power Harrows from Howard.



*HK 31 HY with toothed packer roller.*



*HK 31-600 HY with Nordsten NS 5160, transport width 3.00 m.*



*Two beam folding frame.*



*3-speed leverchange gearbox HK 31.*



*Central gearbox HK 31.*

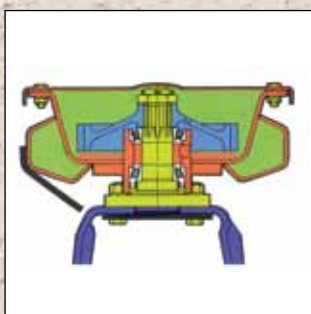


*Depth adjustment.*



*HK 32-600 HY with Nordsten NS 5160.*

Type	Working width, m	Transport width, m	Recommended tractor power HP	Number of rotors	Weight without roller, kg	Rotor rpm 1000/min.
HK 31-400 HY	4.00	3.0	95-200 (100-270)	16	1,750	270/360/400
HK 31-450 HY	4.50	3.0	100-200 (135-270)	18	1,830	270/360/400
HK 31-500 HY	5.00	3.0	105-200 (140-270)	20	1,950	270/360/400
HK 31-600 HY	6.00	3.0	115-200 (160-270)	24	2,250	270/360/400
HK 32-400 HY B	4.00	3.0	95-184 (100-250)	16	2,100	270/360/400
HK 32-450 HY B	4.50	3.0	100-184 (135-250)	18	2,200	270/360/400
HK 32-500 HY B	5.00	3.0	105-184 (140-250)	20	2,350	270/360/400
HK 32-600 HY B	6.00	3.0	115-184 (160-250)	24	2,600	270/360/400
HK 32-400-S HY	4.00	3.0	95-220 (100-300)	16	2,100	274/318
HK 32-450-S HY	4.50	3.0	100-220 (135-300)	18	2,200	274/318
HK 32-500-S HY	5.00	3.0	105-220 (140-300)	20	2,350	274/318
HK 32-600-S HY	6.00	3.0	115-220 (160-300)	24	2,600	274/318



*Frame and rotor unit HK31.*



*Rotor unit HK 32.*



*Side deflector.*

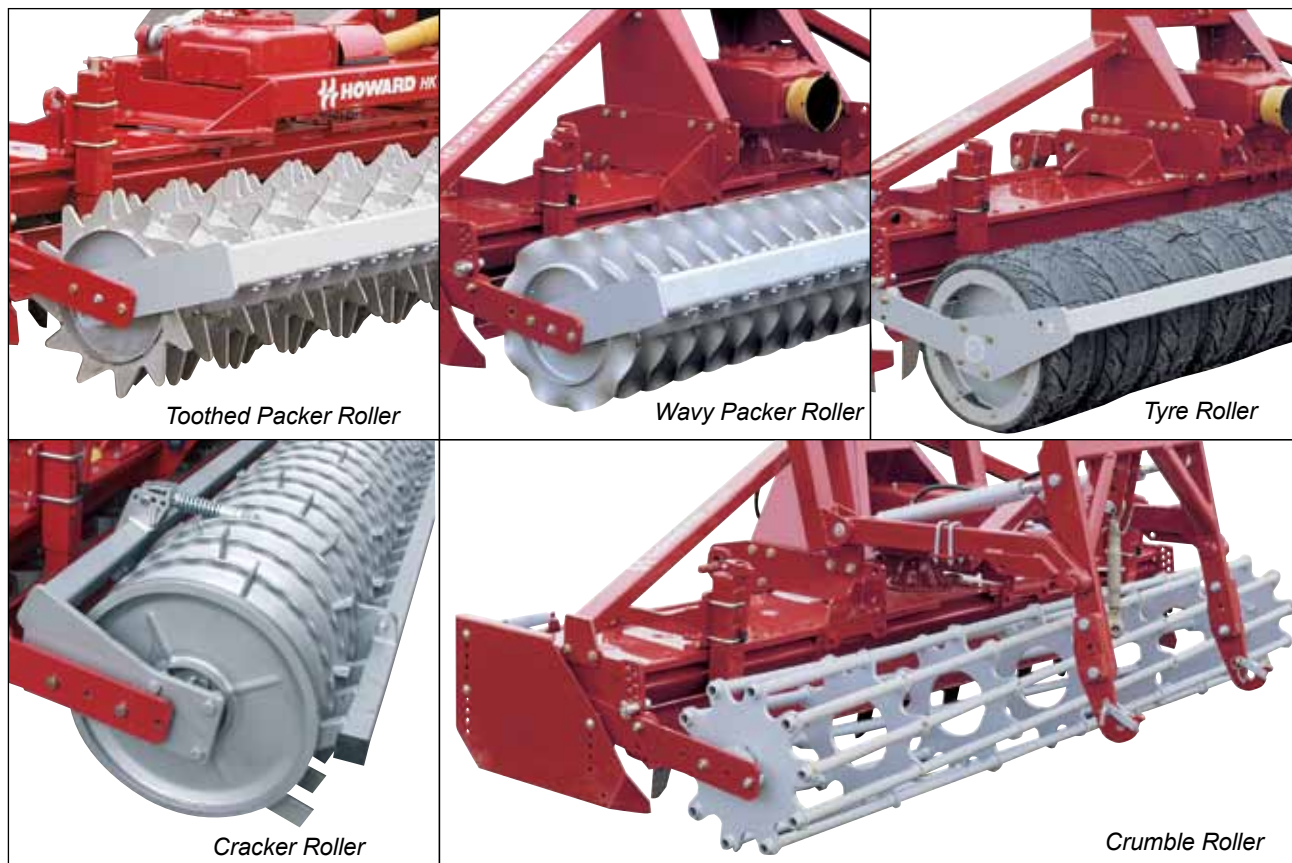


*Levelling bar (optional).*

# Rollers to suit all soils and conditions

Ultimate versatility is essential and the wide selection of rear rollers enables the Howard Power Harrows to be perfectly suited to different soils and conditions.

The right choice of roller also enables effective cultivation and drilling when the Howard Power Harrow is used in combination with a seed drill.



*Howard Power Harrow with different rollers.*



**Kongskilde UK Ltd.**  
Hempstead Road, Holt  
Norfolk NR25 6EE  
United Kingdom  
Tel: +44 (0) 1263 713291  
Fax: +44 (0) 1263 712922  
mail@kuk.kongskilde.com  
www.kongskilde.com