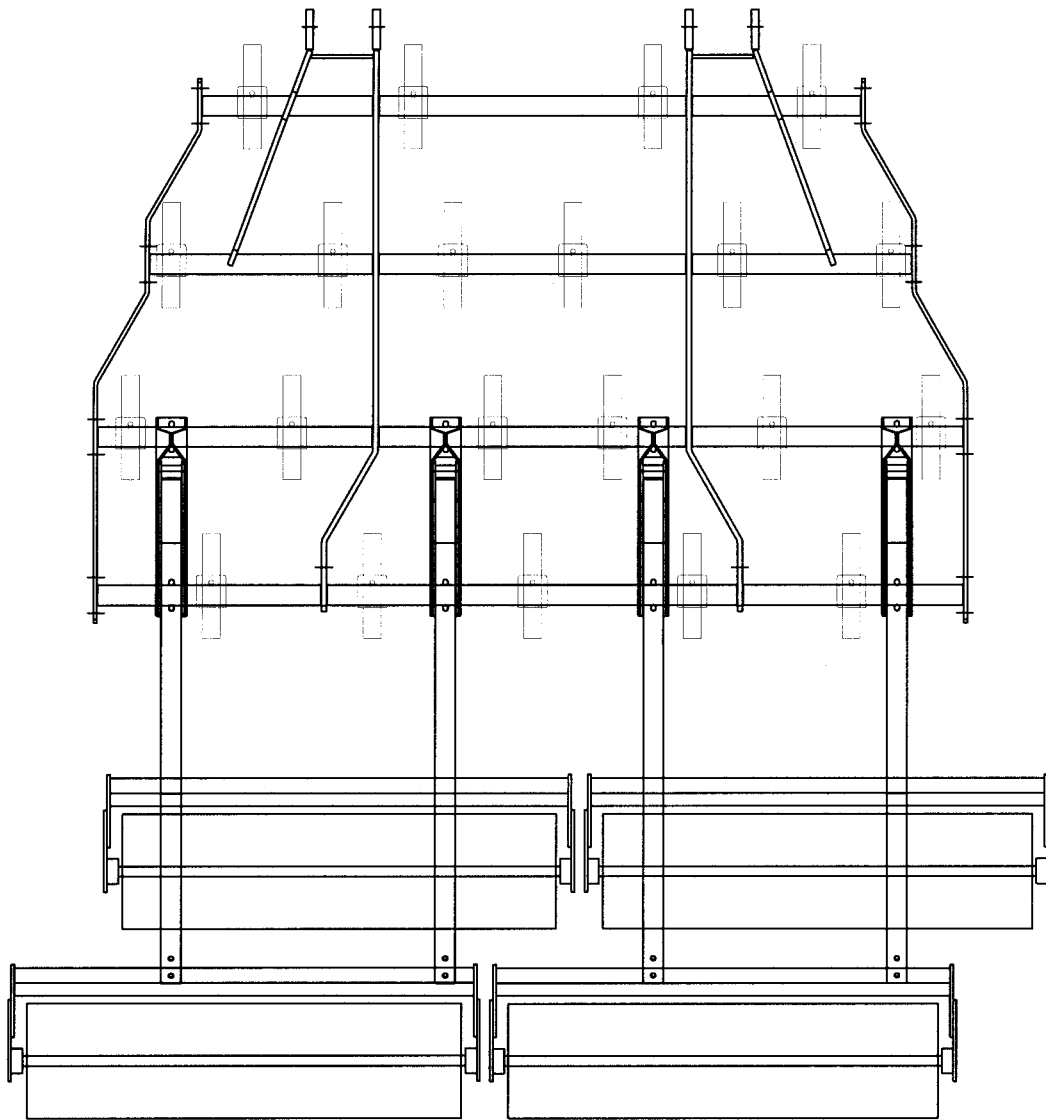


800 SERIES
FULLY MOUNTED CULTIVATORS

Kongsilde
800 Series



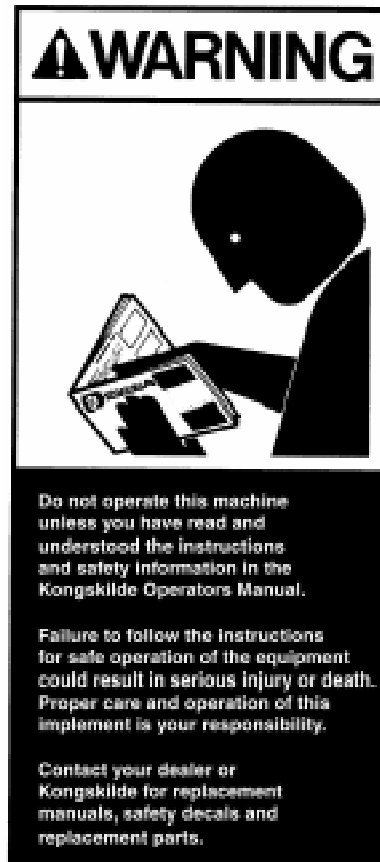
ASSEMBLY INSTRUCTIONS

TABLE OF CONTENTS:

INTRODUCTION.....	3
PRE ASSEMBLY INSTRUCTIONS.....	4
ASSEMBLY INSTRUCTIONS - FRAME AND TINE MOUNTING.....	5
A-FRAME ASSEMBLY.....	6
OPTIONAL GAUGE WHEEL ASSEMBLY.....	7
SPECIAL BRACKET FOR OPTIONAL HILLING ATTACHMENTS.....	8
DECAL MOUNTING.....	10
CULTIVATOR SPECIFICATIONS.....	11
TINE PATTERNS.....	12

Introduction:

Please take the time to carefully read and review all instruction booklets provided with your new Kongskilde product.



These instruction booklets have been developed to assist you in assembling, adjusting and maintaining your new Kongskilde Product to obtain optimal performance over the lifetime of the product.

A copy of the Spare Parts List has also been provided in order to identify the components and hardware needed for each step of the assembly and to help you identify and obtain replacement parts in the future.

When the assembly of the unit is completed, please refer to the Owners Manual before attempting to adjust or use the product. The Owners Manual will provide you with further instructions on the proper Field Settings, Adjustments and Maintenance Procedures for Safe Operation of the unit.

If optional equipment or attachments have been ordered for your unit, please refer to the instruction booklets provided for proper installation and adjustment of these accessories.

Please take the time to fill out and return the Owners Registration and Warranty Form provided in the Owners Manual in order to activate the warranty coverage.

Pre Assembly Instructions:

Assembly of Kongskilde products should only be undertaken by authorized Kongskilde Dealers or an approved service provider who has the necessary tools, equipment and training for safe handling and proper assembly of the unit.

Proper handling and assembly of the components is critical in order to validate the warranty policy.

It is important to note that the frame components are heavy and somewhat awkward to handle. Proper lifting devices such as overhead cranes, boom lifts or mobile lift trucks should be used at all times when moving or handling the large frame components and must only be operated by individuals who have had the proper safety training for using such devices. Proper steel assembly stands or support jacks should also be used to support the frame components and prevent them from falling during assembly.

Recommended assembly tools include:

A full set of standard open or box end wrenches and sockets; assorted sizes of pin punches; a heavy hammer and/or sledge hammer; a pry bar; a large adjustable wrench; and pair of visegrip or similar type pliers.

Optional tools could include an all purpose jack and a good quality air or electric drive impact tool with heavy drive sockets.

The assembly area should be should be large enough to allow workers and equipment to move around freely during assembly of the unit.

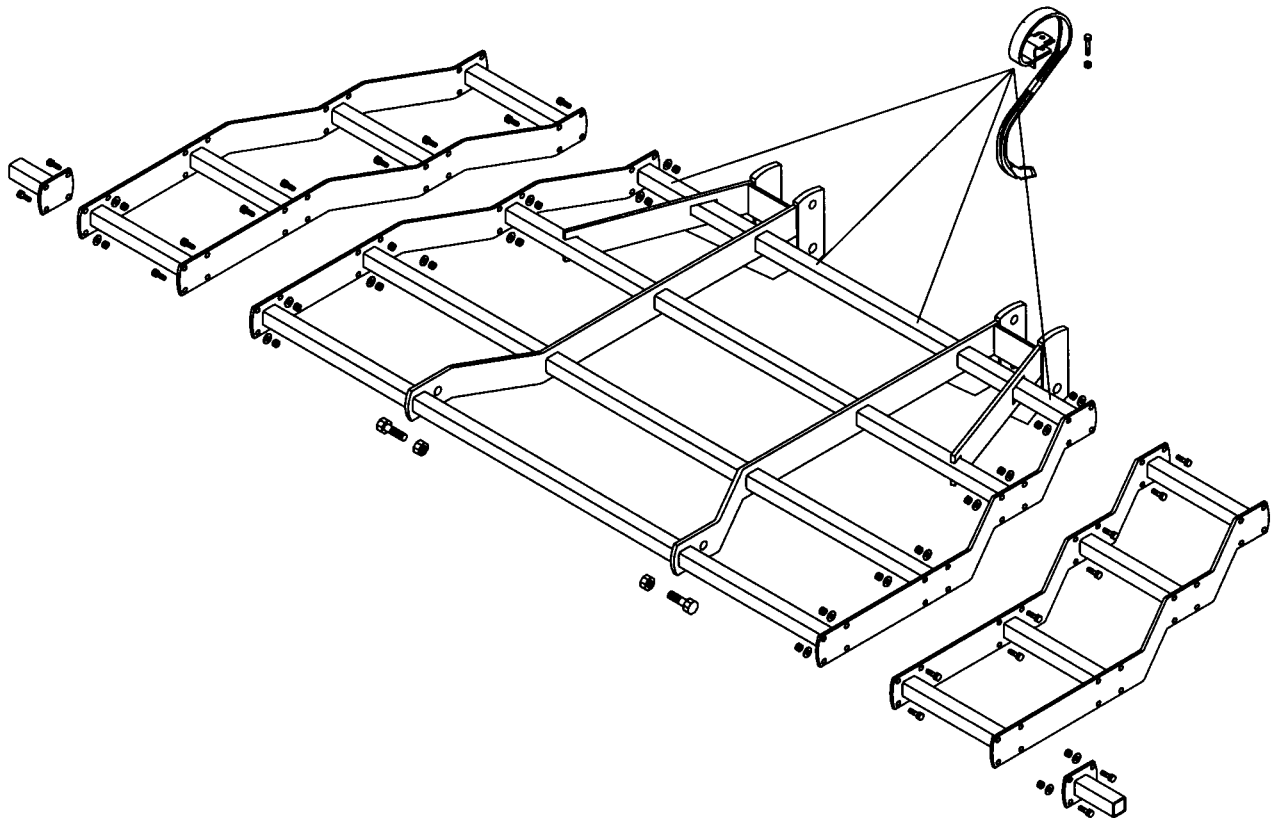
The ceiling height and the size of the building exit door must also be considered in order to safely move the cultivator outdoor after assembly.

The floor area should be relatively clean and level. Proper lighting and ventilation should also be provided to allow the work to be carried out in a safe and efficient manner.

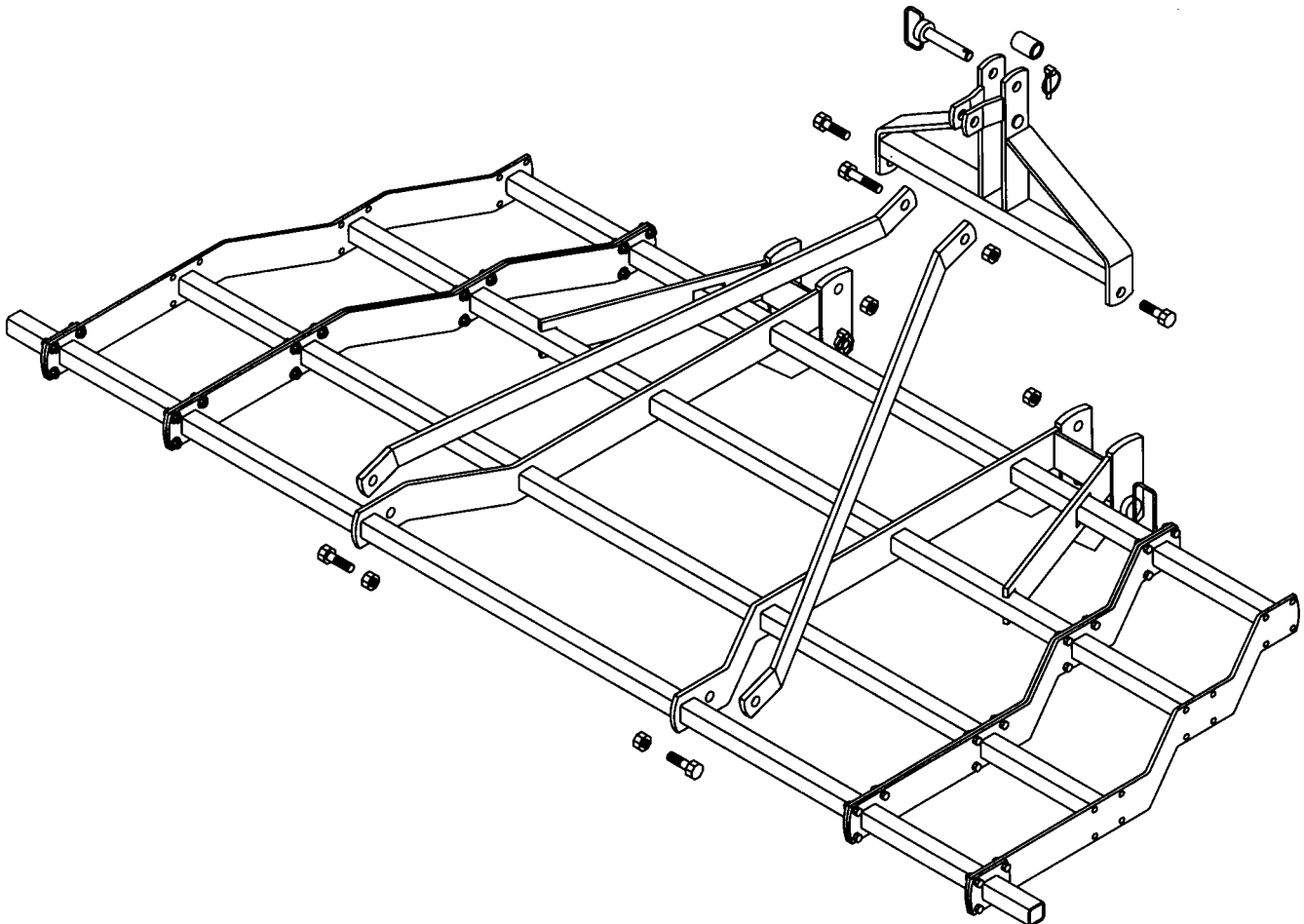
Assembly Instructions:

Note: This booklet outlines the basic frame assemblies and tine patterns for standard field cultivation. Special instructions and tine patterns are available on request for set up of units working in bedded ground.

1. Place the main frame on two steel stands that are approximately 30" in height. This will make it easier to assemble the cultivator and mount the tines.
2. In some cases the cultivator model is made up of a main centre frame section with a pair of bolt-on side extension frames or extension tubes. If this is the case, complete the assembly of the frame sections first before mounting the tines or A-frame.
Please note that the add-on side extensions are the same and can be mounted to either the left or right side simply by flipping them over.
3. Mount the tines on the frame tubes according the tine pattern diagram provided in the back of the book for each cultivator model.

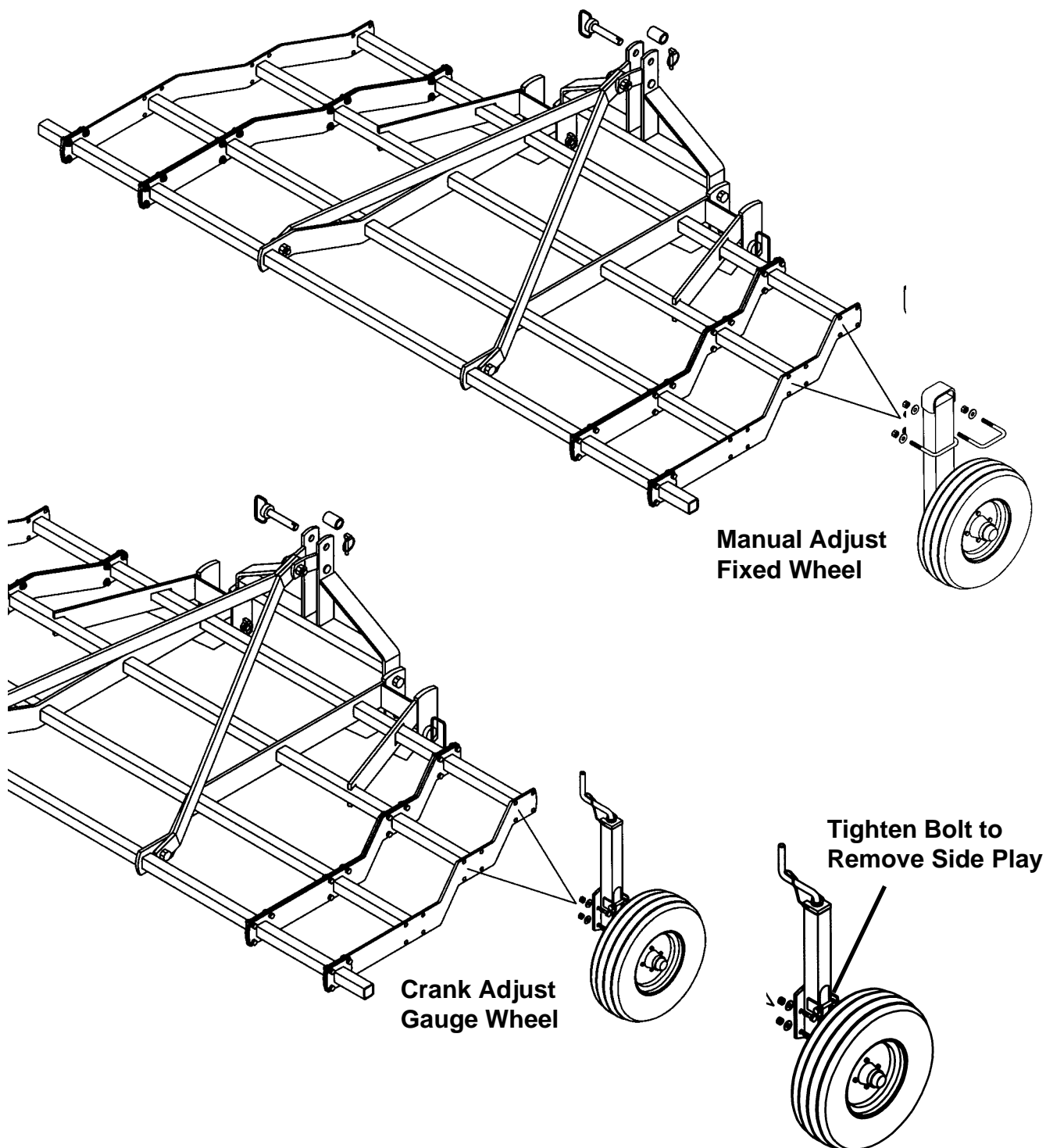


4. When the tines have been mounted, assemble the hitch A-frame to the inside of the lower hitch plates with the 1" x 2-1/2" bolts and locknuts provided. Make sure that the tabs for attaching the hitch connection bars are facing the rear of the cultivator. (NOTE: On some earlier models the A-frame was a 2 piece right and left weldment as shown in the Spare Parts Book).
5. The new 1 piece A-frame is a solid weldment with a fixed pin connection for Cat.III quick hitches. The older 2 piece A-frame attaches together by inserting the 1" x 5" long bolt thru either the centre or bottom hole. Use the spacer bushing to keep the frames the correct distance apart.
6. The A-frame must be supported to the rear of the cultivator frame with the hitch connection bars before hooking up to the tractor. Attach the bars to the inside of the tabs on the hitch A-frame and secure with the 1" x 3-1/2" bolt and locknut provided. Secure the connection bars to the outside of the frame member at the rear of the cultivator with the 1" x 2-1/2" bolts and locknuts provided.
7. Note: If you are attaching the cultivator directly to the tractors 3pt hitch links, attach the tractors top link turnbuckle by inserting the top draw pin thru the upper hole in the A-frame and secure with the lynch pin provided. If the cultivator will be attached to the tractor via a quick hitch, the fixed pin, (or centre hole on older A-frames), is used for Cat.III quick hitches only. **The A-frame is not designed for connection to Cat.II quick hitches.** The lower links are connected using the lower hitch pins (with handles), through the lower draw plates and secured with the lynch pins provided. . The pins for Model 807 and up, are all Cat.II with bushings provided for Cat.III. Model 804 has lower draw pins for Cat.I & II.



8. There are 2 types of optional gauge wheels; a fixed position - manual adjust wheel, and a variable position - crank adjust wheel. In either case the gauge wheel can be mounted to the front or mid tool bar position as shown in the diagram below.

NOTE: If the crank adjust wheel develops too much side play, tighten the adjustment bolt and locknut to squeeze the side plates tighter and reduce the movement in the wheel arm. Do not over tighten as this will make it difficult to adjust the wheel up and down with the crank mechanism.



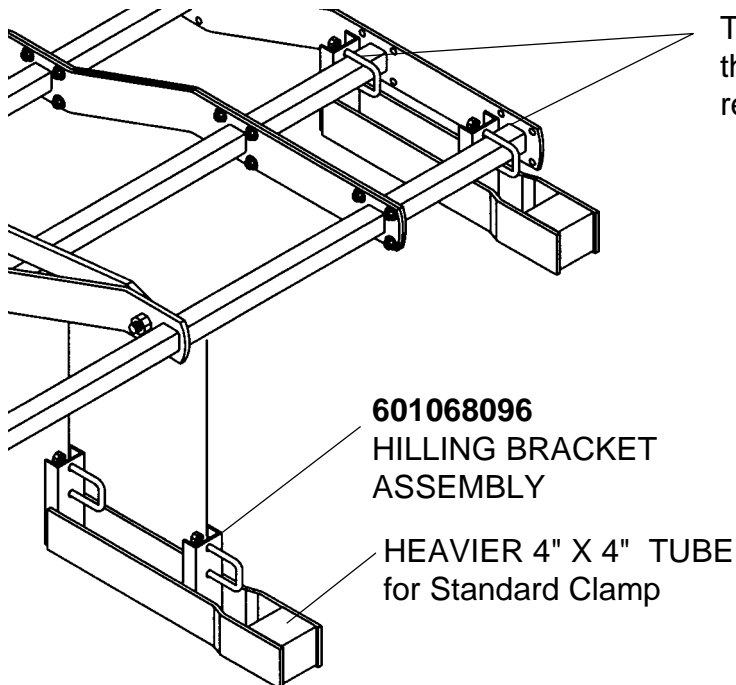
Special Optional Equipment

We have developed a new Mounting Bracket Assembly for customers using the 800 Series Mounted Cultivators in Bedded Ground with Optional OEM rear mounted attachments.

Rear mounted Hillers or Concave Disc attachments shown in the photographs below can place a lot of stress on the cultivator frame when mounted directly to the rear 2" x 2" tube of the 800 Series Cultivator.

The new mounting bracket greatly reduces the twisting load on the frame by spreading the load over the two rear cultivator frame tubes. The Mounting Bracket was designed with a heavier 4" x 4" tube for attaching the Hiller Standard Clamp.

See Page 2 for further mounting instructions.



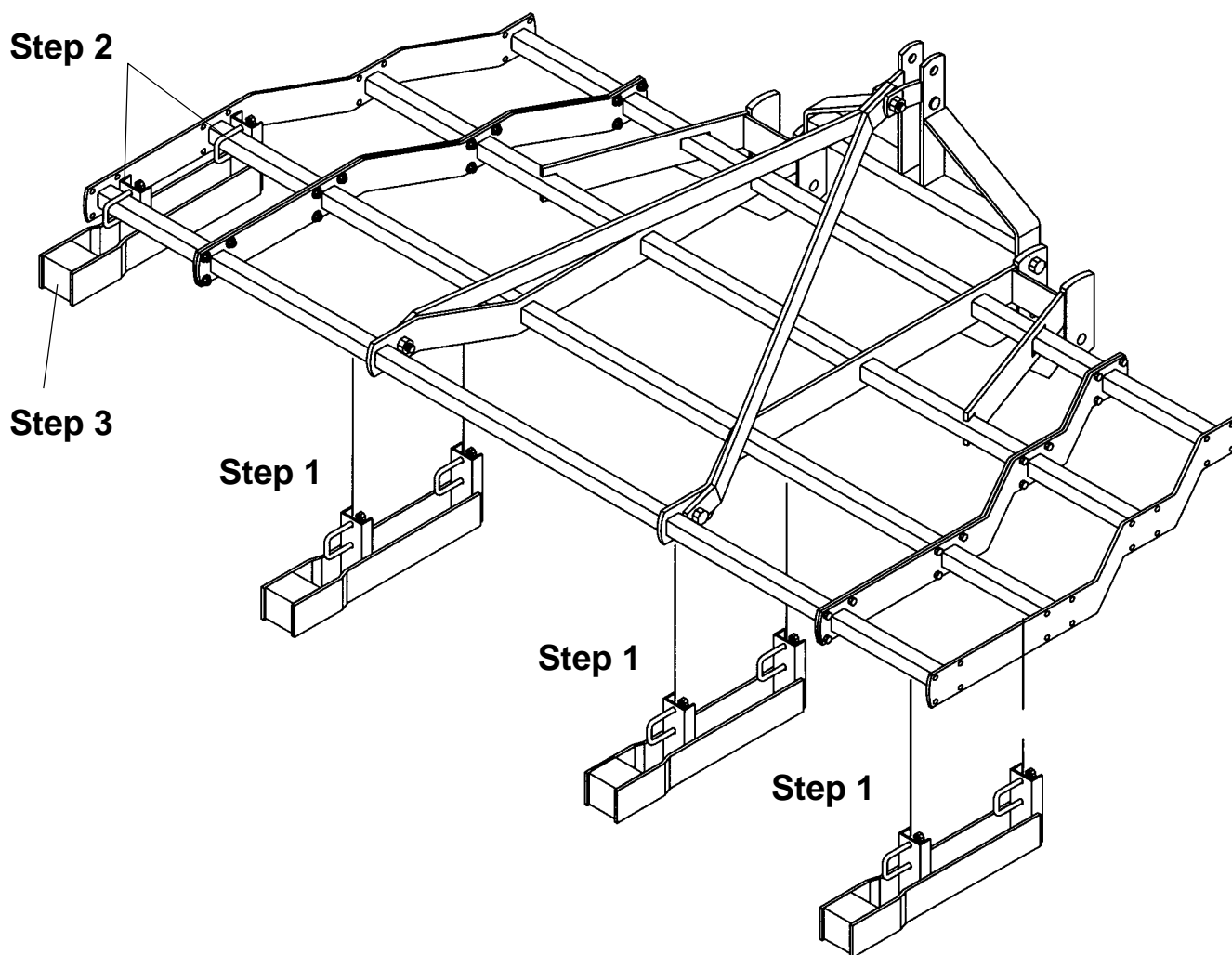
The New Mounting Bracket attaches to the two rear 2" X 2" frame tubes thus reducing the twisting load.

Do Not mount the Hiller Standard to the 2" X 2" Tube as this places a twisting load on the rear frame of the cultivator.



Mounting Instructions:

- 1) Position the Accessory Mounting Brackets for correct spacing of the Hillers according to the working width of the cultivator and the bed width.
- 2) Attach the Kongskilde Accessory Brackets to the bottom side of the rear two rear frame tubes of the cultivator with the U-Bolts and Locknuts supplied.
- 3) Attach the Standard Tube Clamp for the Hilling Attachment to the 4" x 4" tube of the Mounting Bracket.
- 4) Adjust the height of the Hiller as required for proper working depth of the machine and secure all nuts and bolts.



DECAL MOUNTING

There are 4 x Kongskilde decals and 2 x 800 Series decals provided in the envelope with the Manuals.

1. When the cultivator assembly is complete, wipe the sides of the hitch connection bars and cultivator frame side members with a clean cloth.
2. Mount 2 - Kongskilde decals, one on each side of the cultivators frame so that they are centred between the rear 2 sets of holes in the side bar, and between the 2 rear toolbars.
3. Mount the other 2 - Kongskilde decals along with the 2 - 800 Series decals, one set on each side of the of the hitch connection bars, so that they are approximatly centred on the bars.

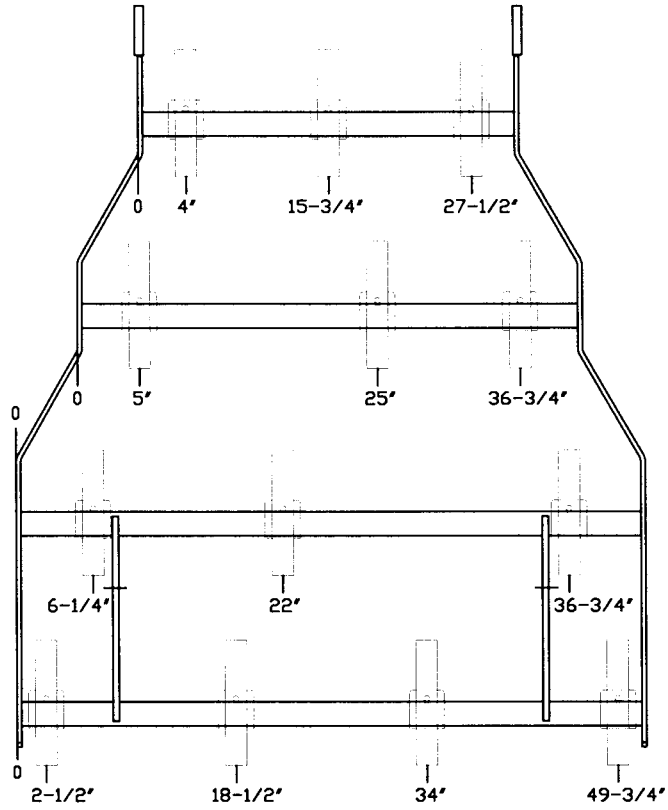
See photographs below:



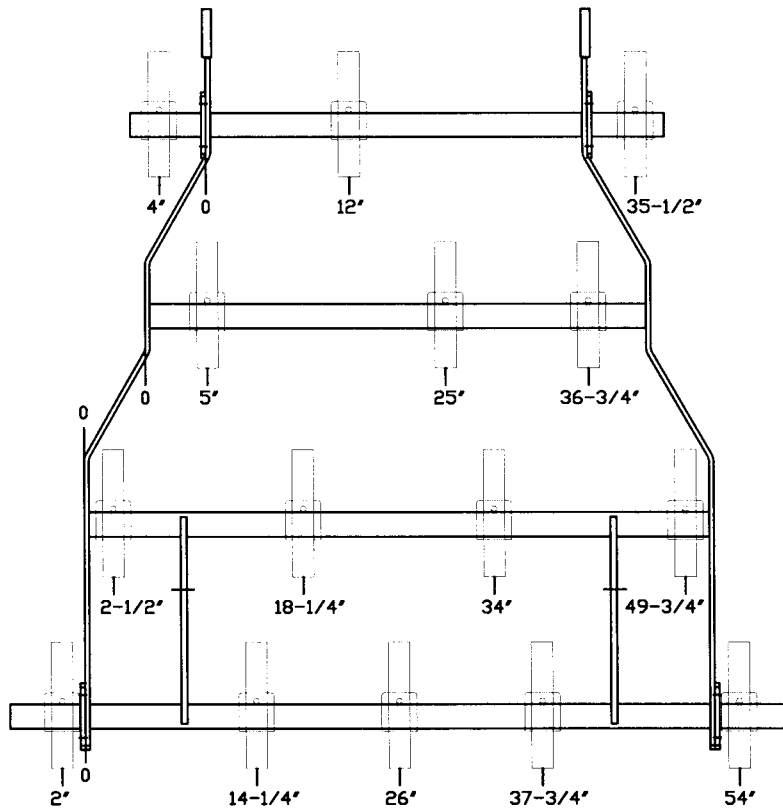
800 Series Cultivator Specifications

	4' Frame	7' Frame	15' Frame	Tine Extension Kit	8" Add On Frame	16" Add On Frame	No. Tines 4" Spacing	Working Width 4" Spacing	No. Tines 6" Spacing	Working Width 6" Spacing	32" R.H. Roller	47" R.H. Roller	55" R.H. Roller	63" R.H. Roller	71" R.H. Roller	32" L.H. Roller	47" L.H. Roller	55" L.H. Roller	63" L.H. Roller	71" L.H. Roller	Hanger Assembly	Harrow Working Width
804-03 Cultivator	1						13	4' 2"	9	4' 2"				1					1		2	4' 7"
804-11 Cultivator	1			4			15	4' 10"	10	4' 8"				1						1	2	5' 3"
805 Cultivator	1				2		17	5' 6"	11	5' 2"					1						2	6' 2"
806 Cultivator	1			4	2		19	6' 2"	13	6' 2"	1	1				1	1				4	6' 7"
807 Cultivator		1					21	6' 10"	15	7' 1"		2					2				4	8' 2"
808 Cultivator		1	2				23	7' 6"	17	8' 2"		1	1				1	1			4	8' 7"
810 Cultivator		1				2	29	9' 6"	19	9' 2"				2						2	4	10' 10"
811 Cultivator		1	2			2	31	10' 2"	21	10' 5"				1	1					1	4	11' 2"
812 Cultivator		1				4	37	12' 2"	25	12' 2"		1	2				1		2		6	13' 6"
813 Cultivator		1	2			4	39	12' 10"	27	13' 2"		1		2			1			2	6	14' 8"
815 Cultivator			1				45	14' 10"	30	15' 2"				2	1				2	1	6	16' 9"
816 Cultivator			1	2			47	15' 6"	33	16' 2"				1	2				1	2	6	17' 6"
818 Cultivator			1			2	53	17' 6"	35	17' 2"			4					4			8	18' 8"
819 Cultivator			1	2		2	55	18' 2"	37	18' 6"			2	2				2	2		8	19' 3"
820 Cultivator			1			4	61	20' 2"	41	20' 2"					3	1			3	1	8	22' 3"
821 Cultivator			1	2		4	63	20' 10"	43	21' 2"				2	2				2	2	8	22' 9"

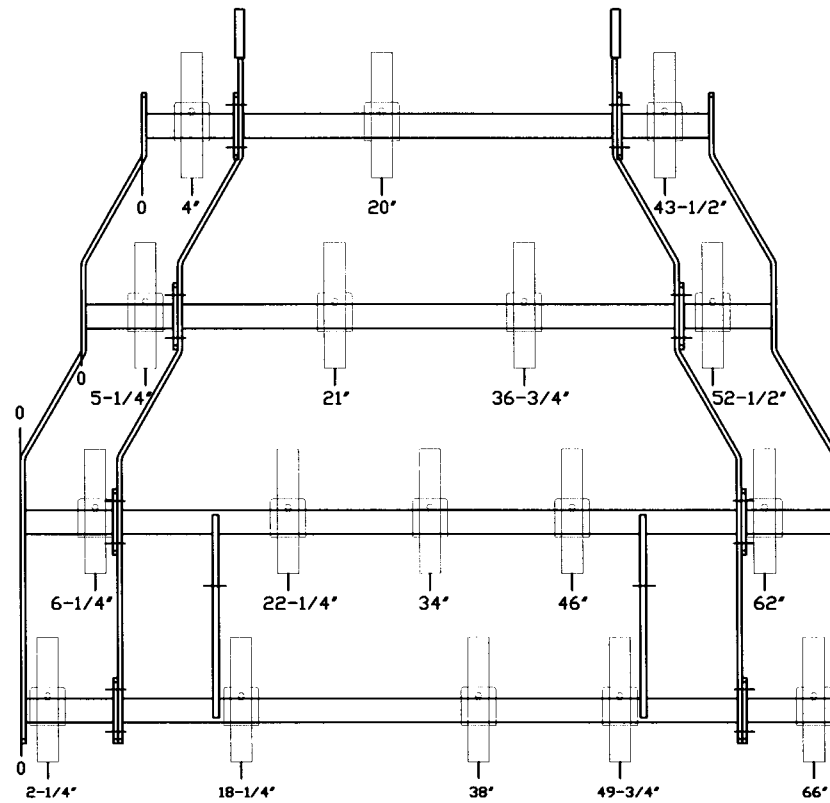
804-03 - 4" TINE PATTERN



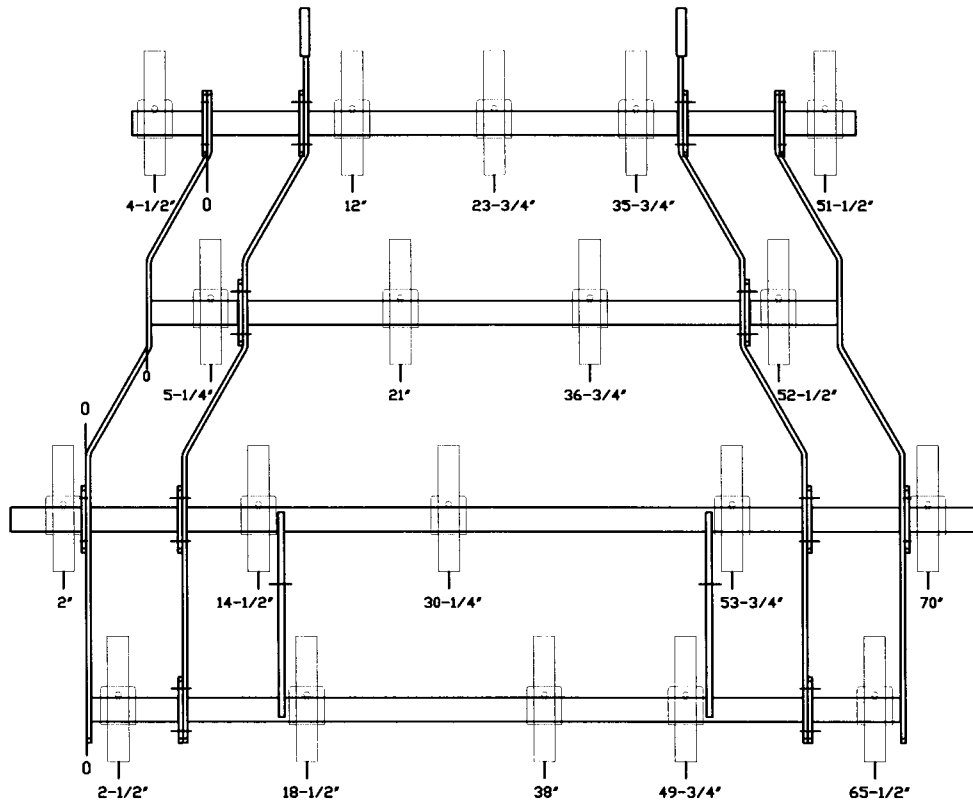
804-11 - 4" TINE PATTERN



805-07 - 4" TINE PATTERN

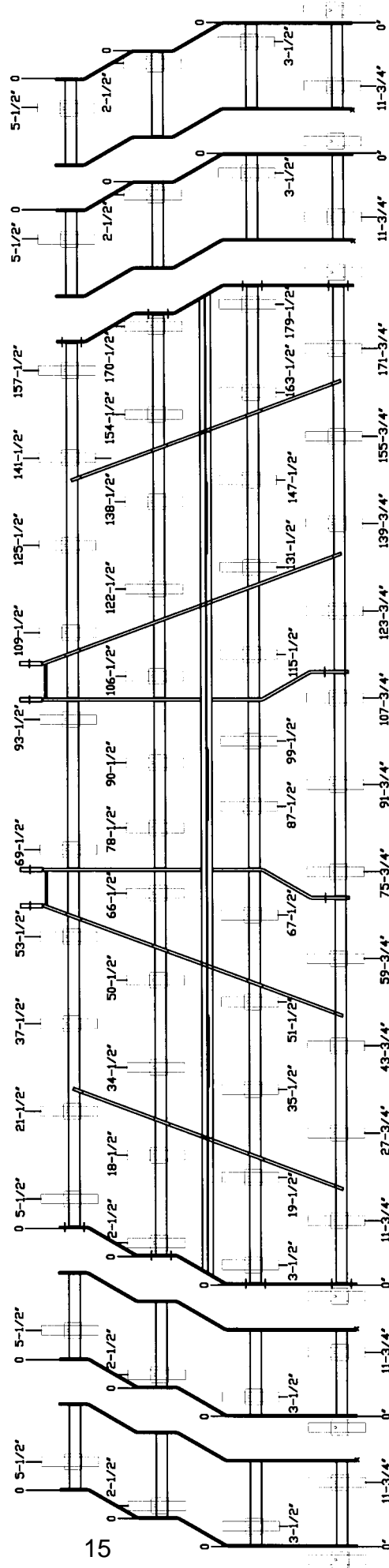


806-03 - 4" TINE PATTERN

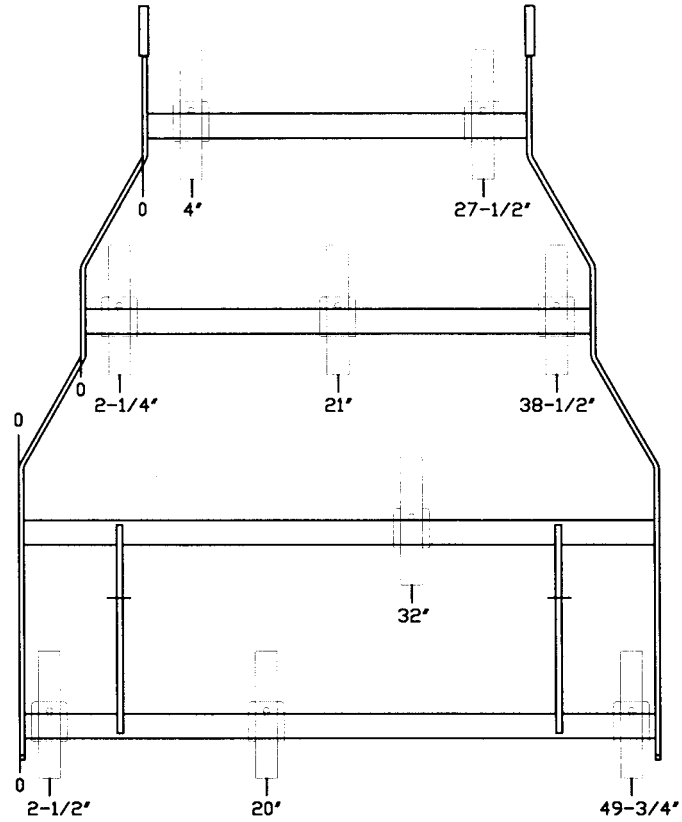


818 - 4" TINE PATTERN 819 + 2 TINES

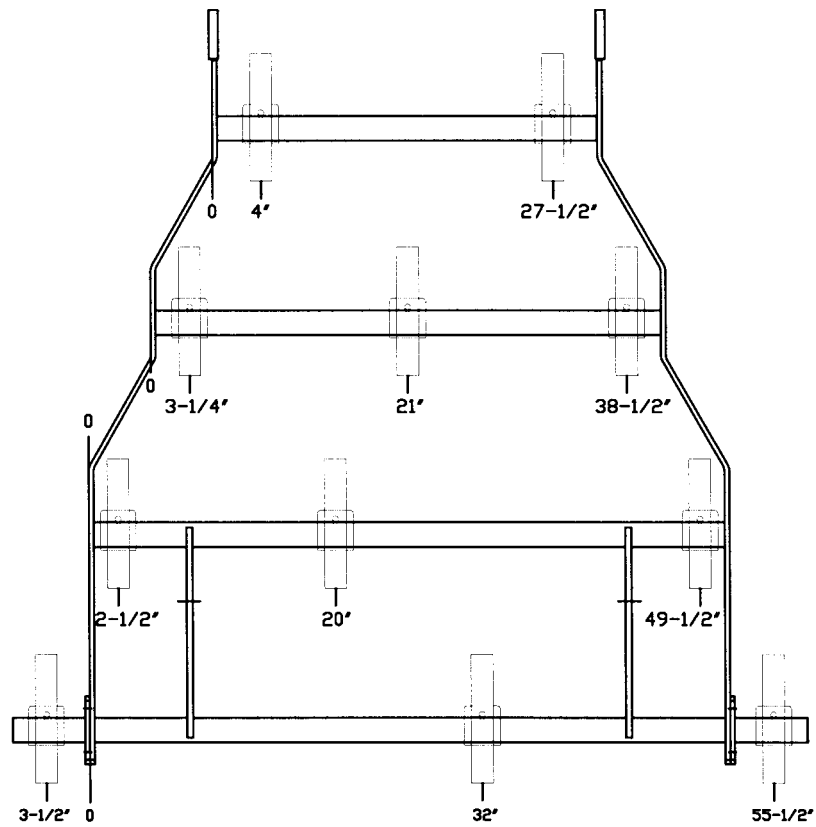
820 - 4" TINE PATTERN $\frac{821 + 2 \text{ TINES}}{2}$



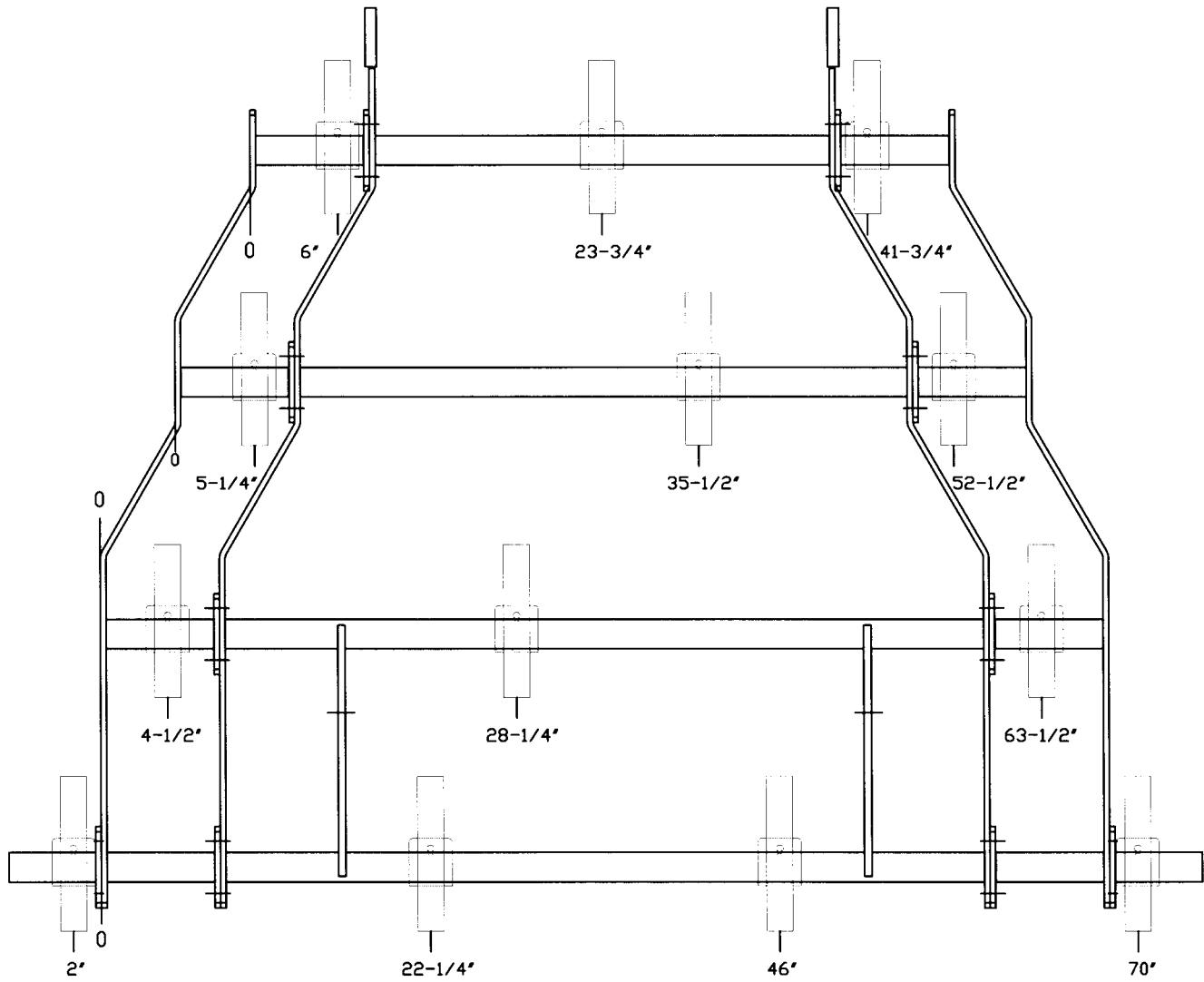
804-05 - 6" TINE PATTERN



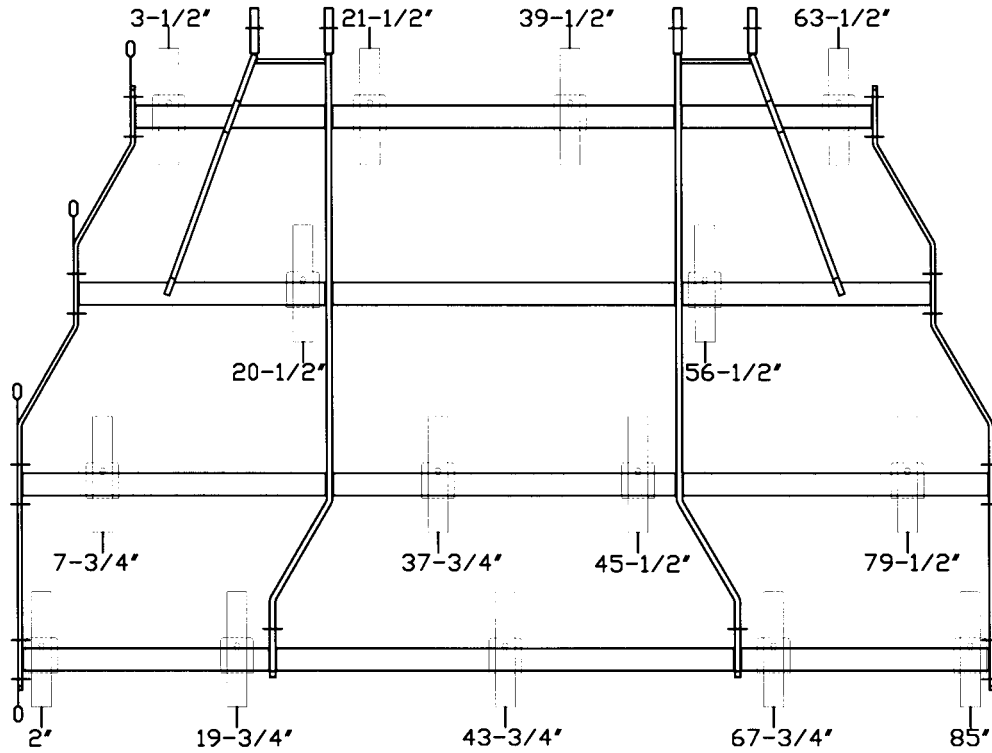
805-05 - 6" TINE PATTERN



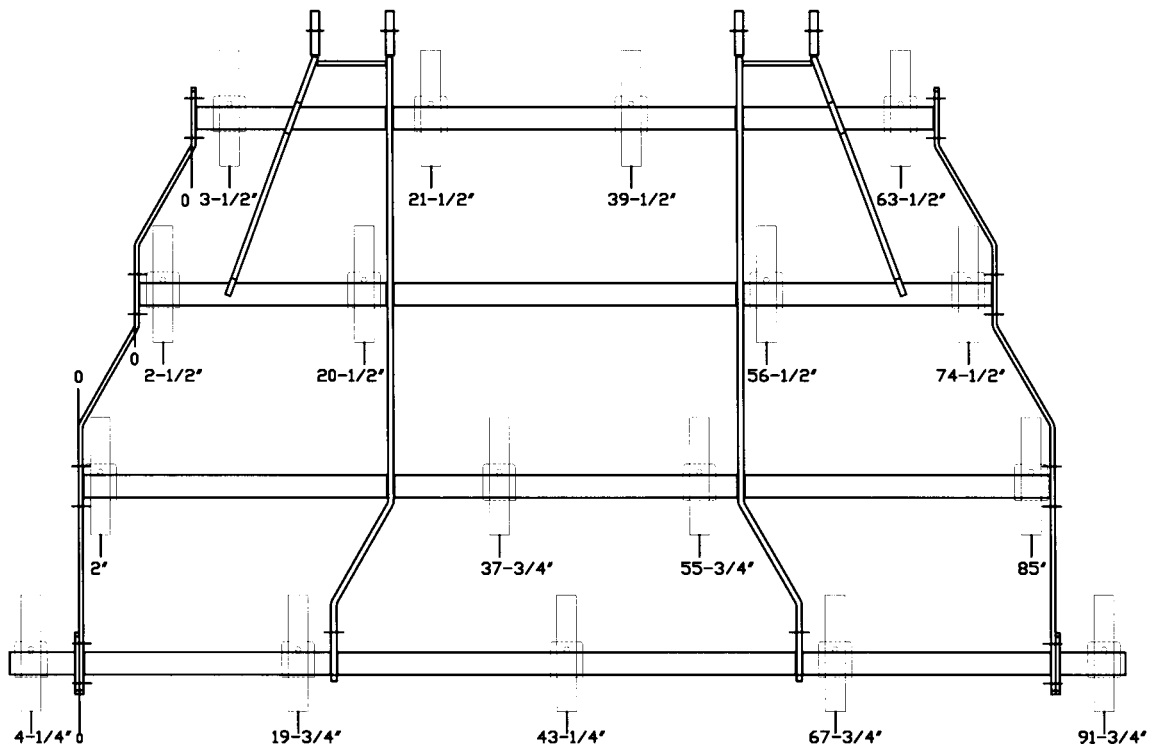
806-05 - 6" TINE PATTERN



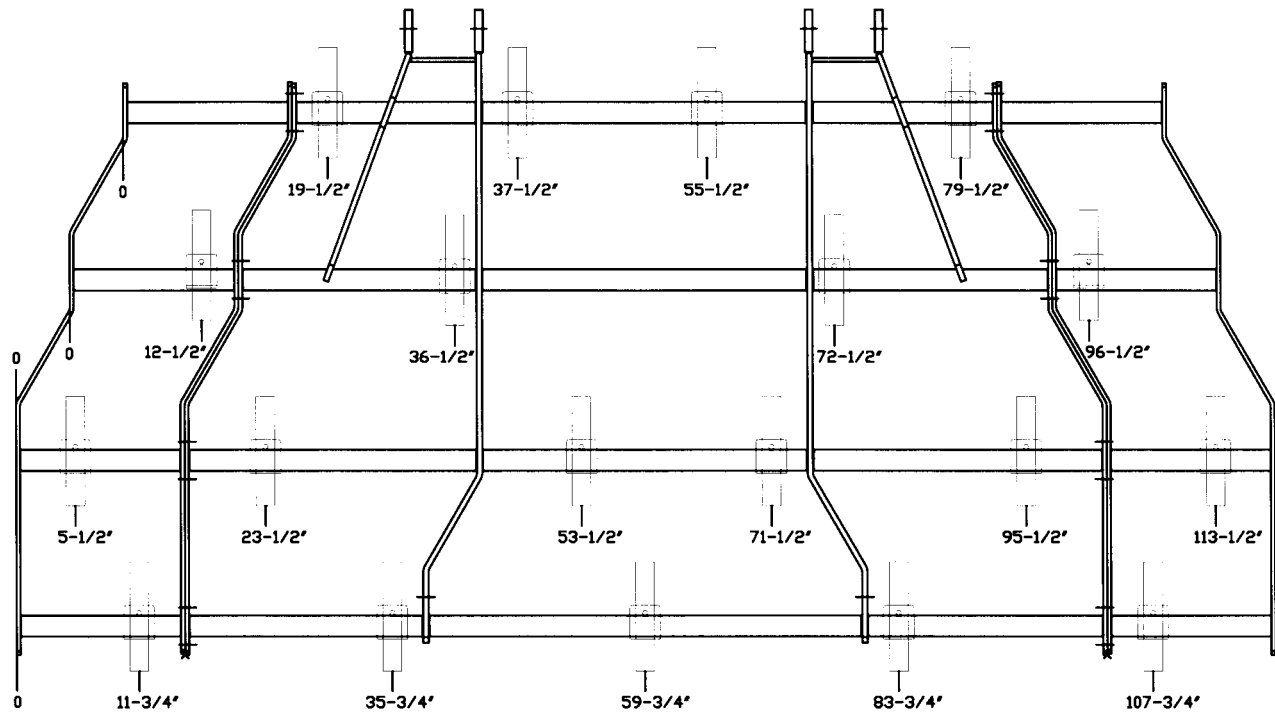
807 - 6" TINE PATTERN



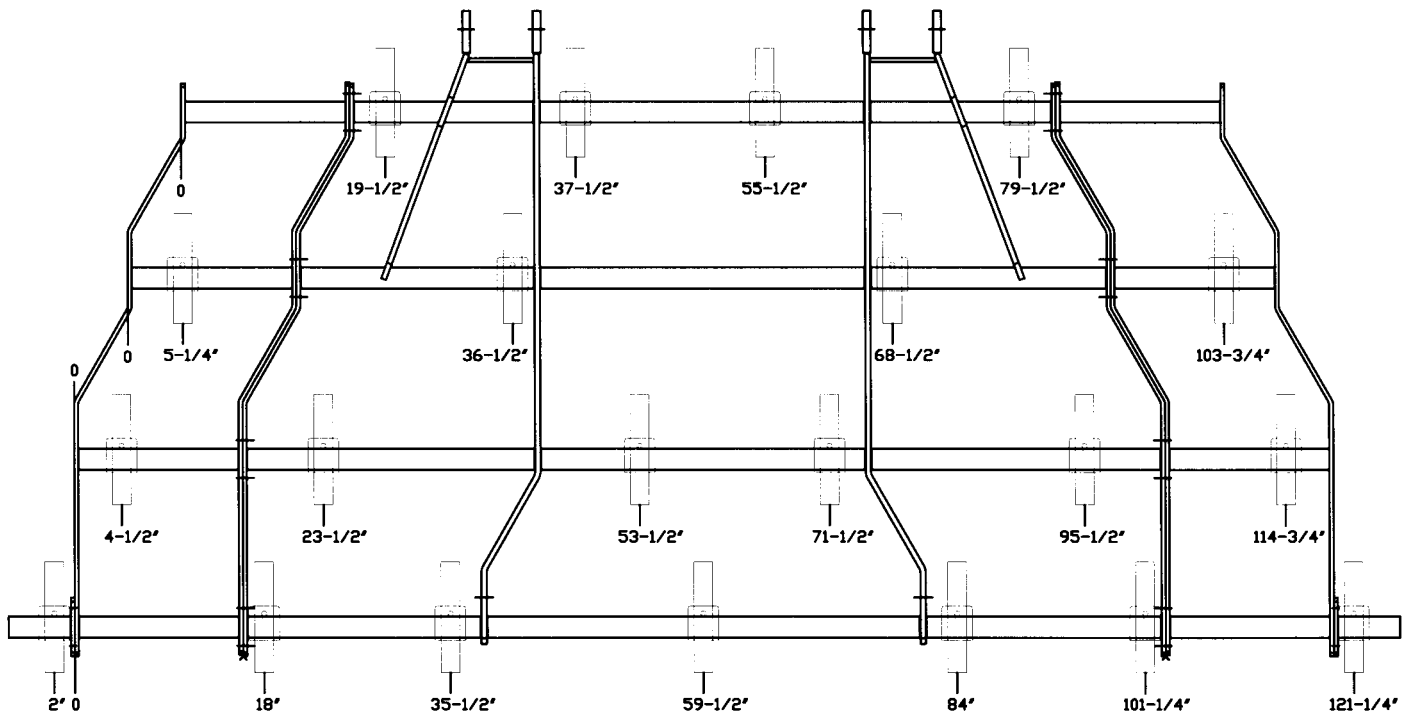
808 - 6" TINE PATTERN



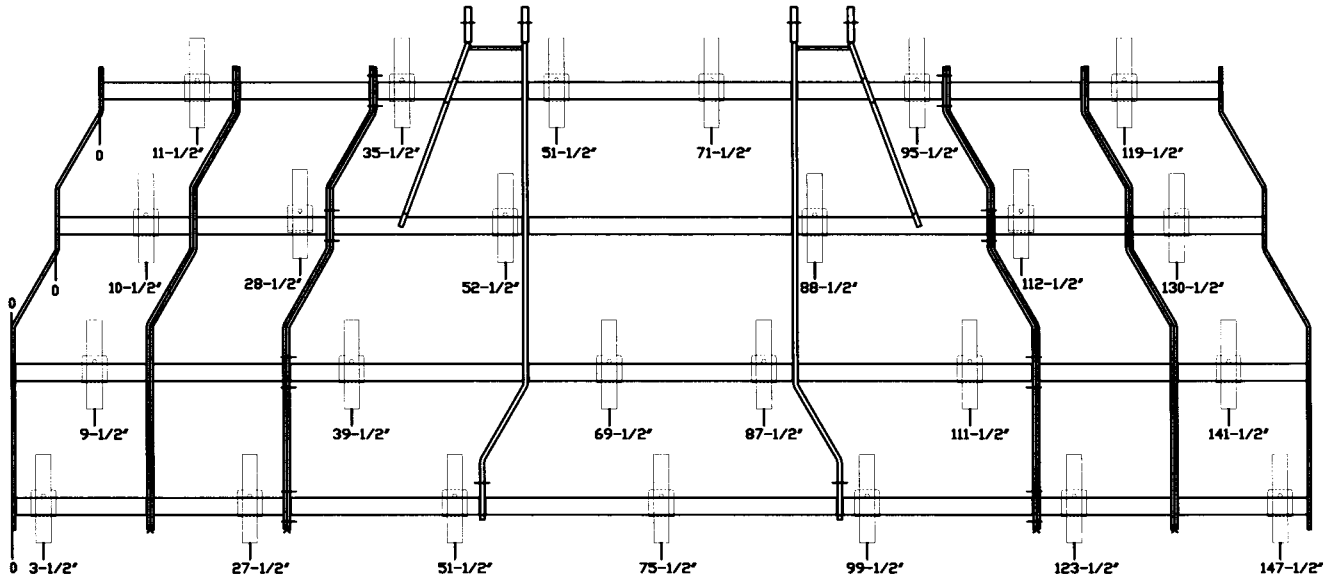
810 - 6" TINE PATTERN



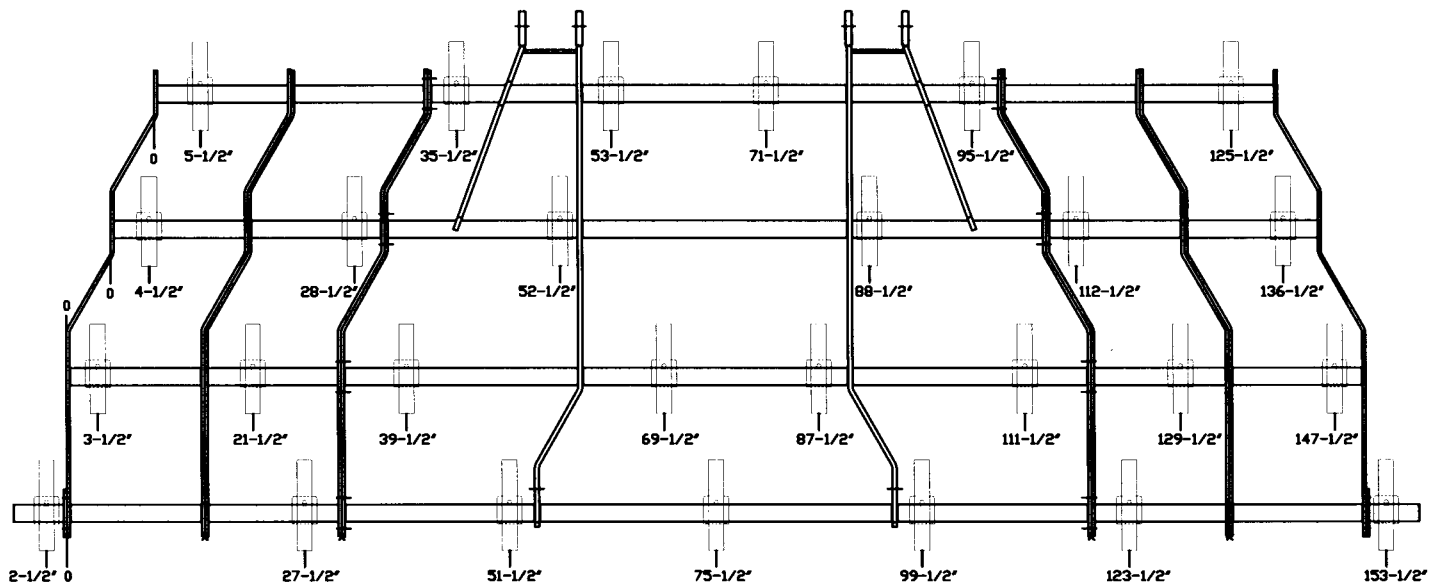
811 - 6" TINE PATTERN



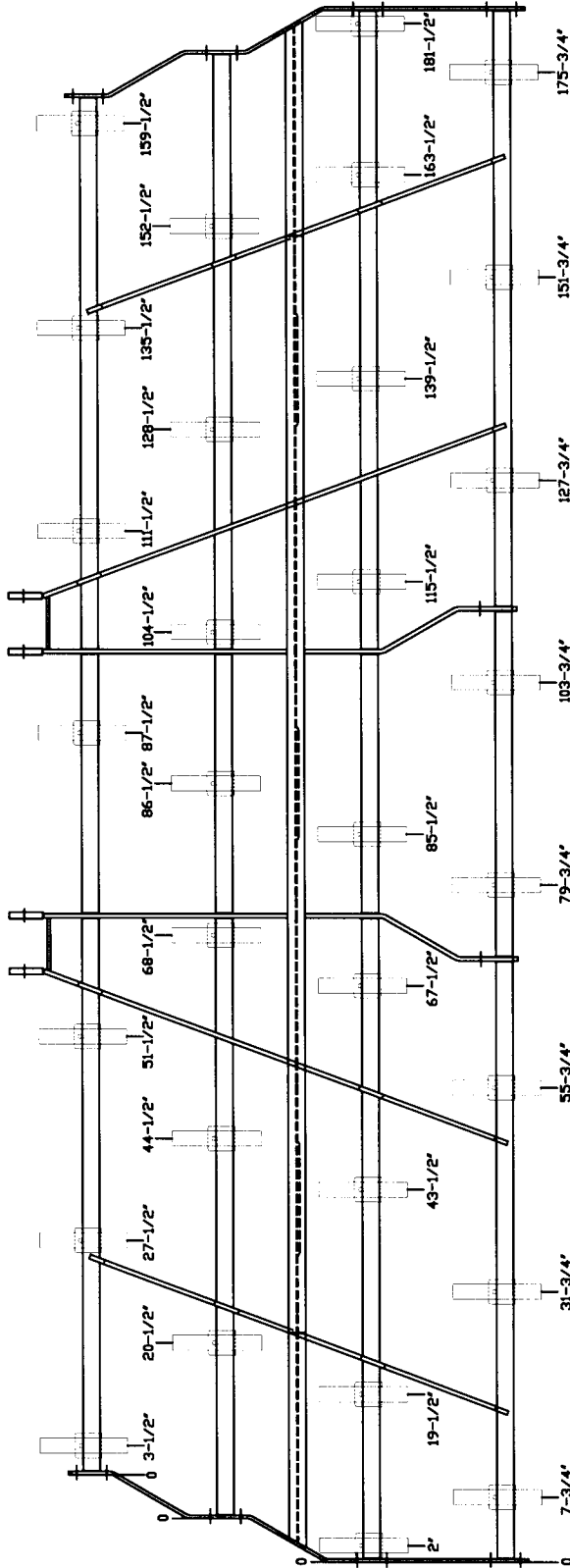
812 - 6" TINE PATTERN



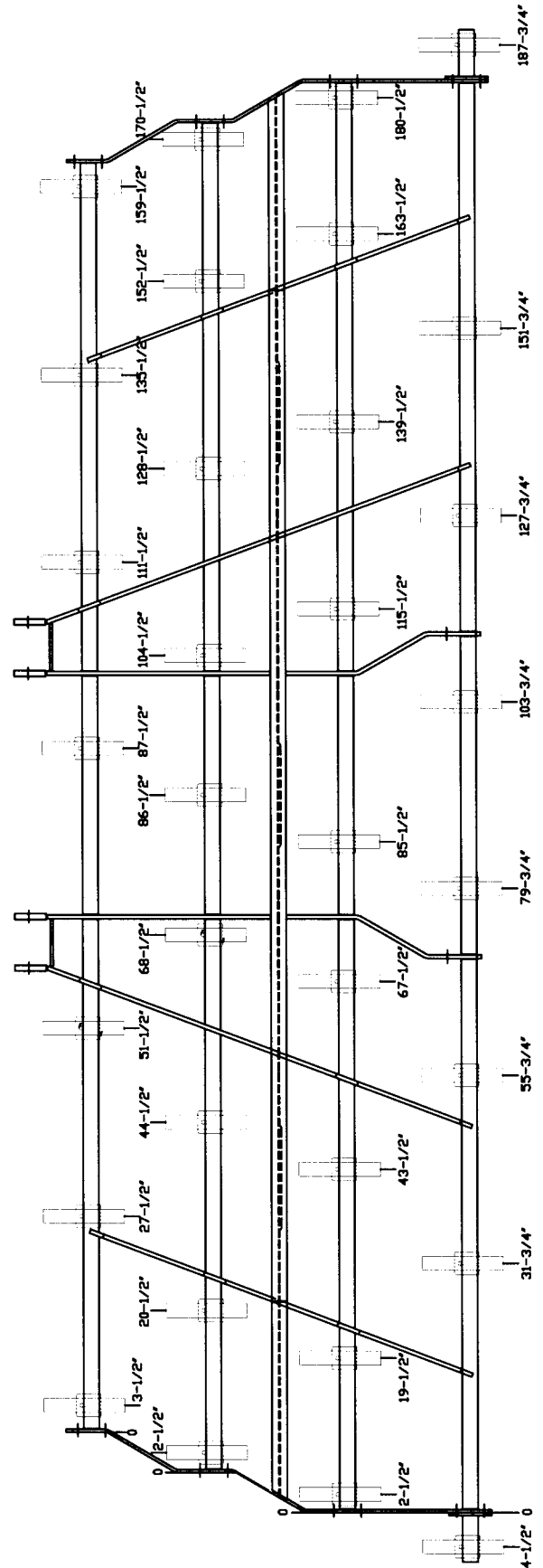
813 - 6" TINE PATTERN



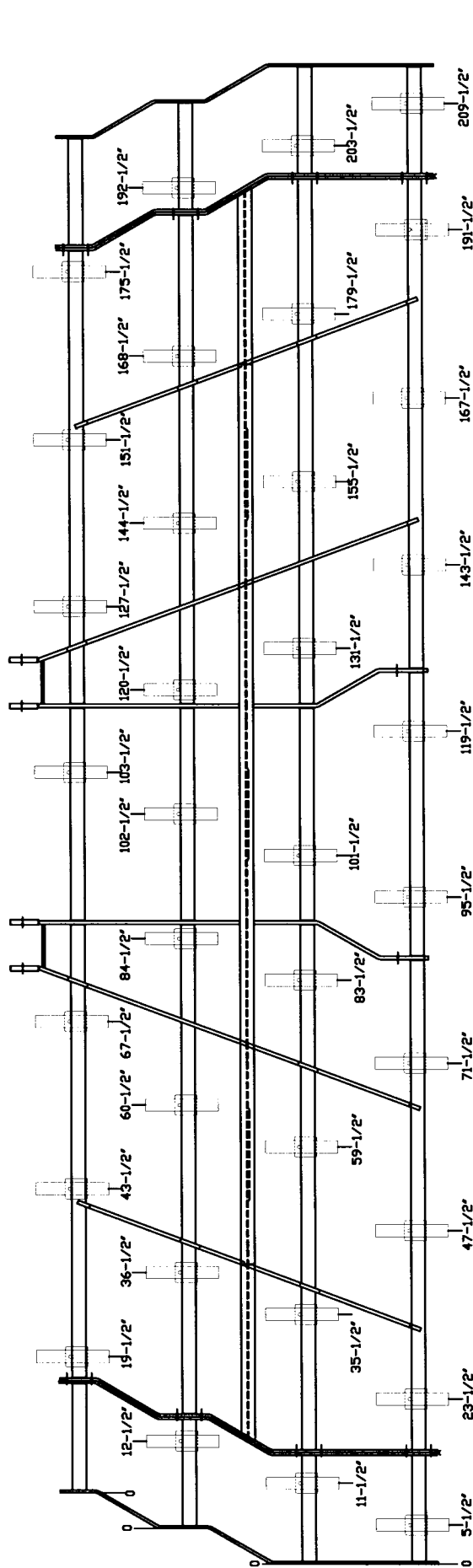
815 - 6" TINE PATTERN



816 - 6" TINE PATTERN



818 - 6" TINE PATTERN



819 - 6" TINE PATTERN

