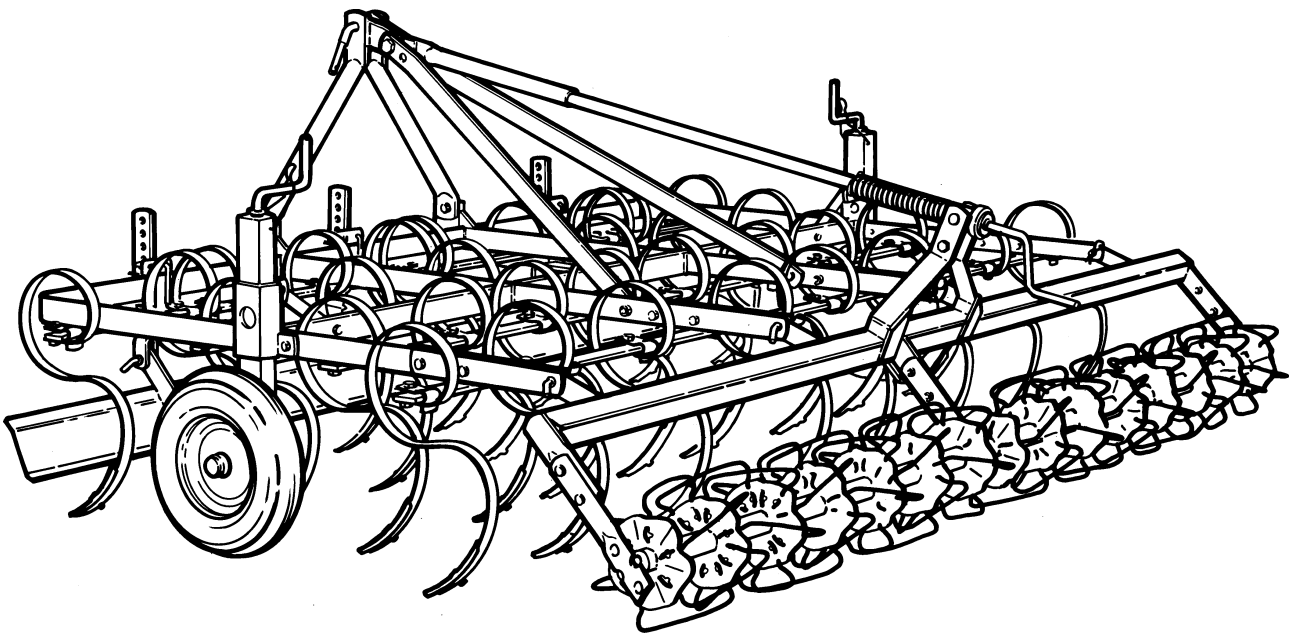


RES



**Reservedelsliste
Spare parts list
Ersatzteilliste
Onderdelenlijst
Liste de pièce de rechange
Lista dei pezzi di ricambio**

RES 17-11, 21-15, 25-17, 29-19 & 34-23

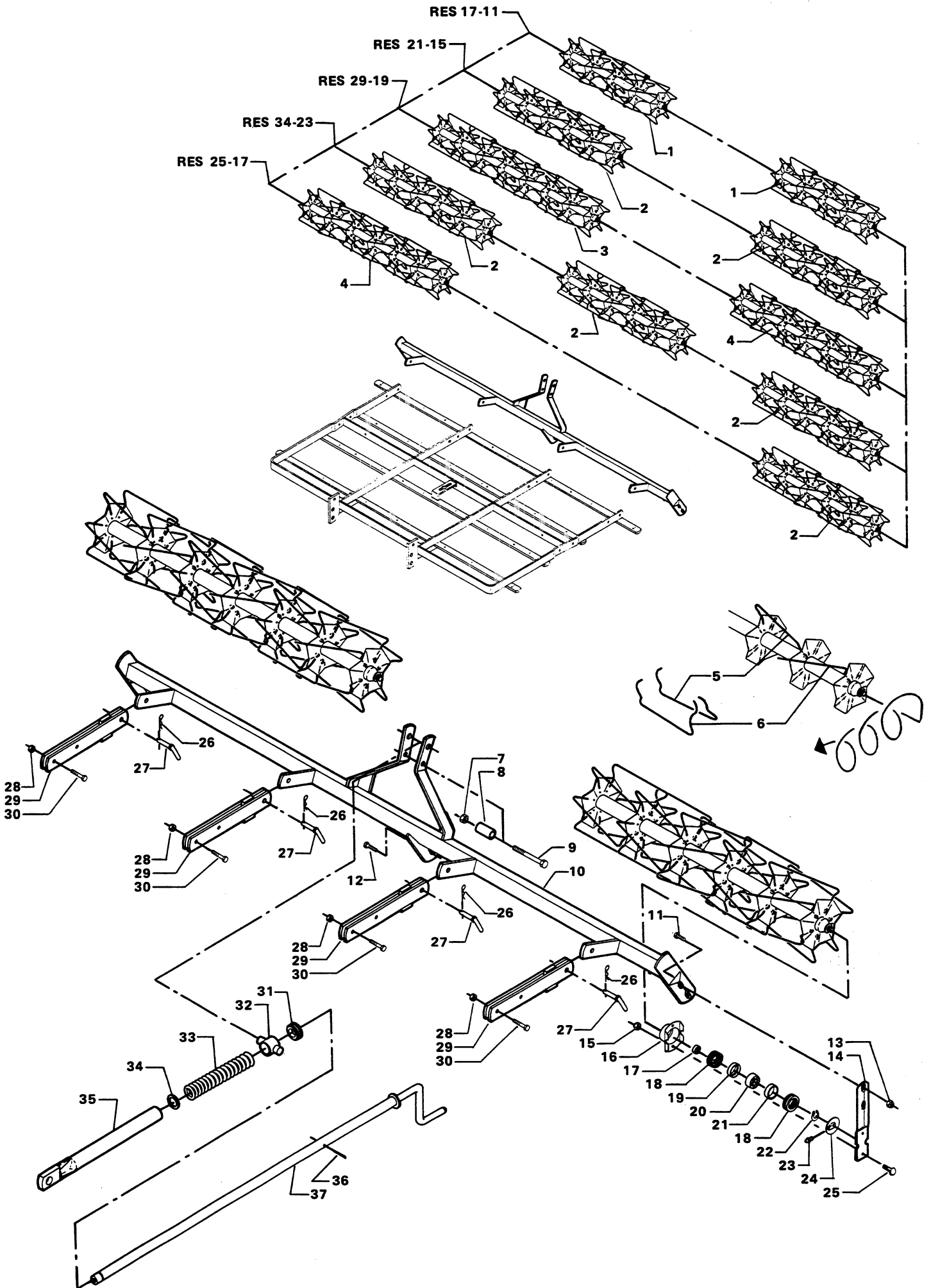


Fig.	Serial no.	Part no.	Pieces	Notes
1		103 000 439		"1000" for RES 17 - 11
2		103 000 440		"1200" for RES 21 - 15, 25 - 17 & 34 - 23
3		103 000 442		"1600" for RES 29 - 19
4		103 000 441		"1400" for RES 25 - 17 & 29 - 19
5		100 000 486		"Right"
6		103 000 487		"Left"
Cpl:		100 302 038	1	M16 x 110 mm, Fig. 7 + 9
8		103 010 128	1	
10		103 011 026	1	For RES 17 - 11
		103 012 026	1	For RES 21 - 15
		103 013 026	1	For RES 25 - 17
		103 014 026	1	For RES 29 - 19
		103 015 026	1	For RES 34 - 23
11		100 306 030	4	Set screw M10 x 30 mm
12		100 306 032	2/4	Bolt M10 x 40 mm
13		100 316 004	6/8	Lock nut M10
14		103 000 268	4/6	
Cpl.		103 000 454	4/6	Complete incl. items 15 - 25
23		100 421 000	4/6	Grease nipple M6
26		100 333 011	4	Hair pin clip ø4 mm
27		104 000 013	4	
28		100 315 016	8	Nut M12
29		103 010 064	4	
30		100 304 035	8	Set screw M12 x 45 mm
31		103 010 049	1	
32		105 018 067	1	
33		103 000 063	1	
34		103 010 045	1	
35		105 018 002	1	
36		100 333 031	1	Split pin ø10 x 56 mm
37		103 000 462	1	

